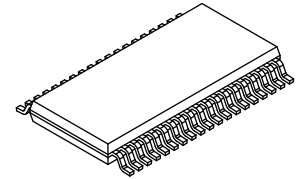
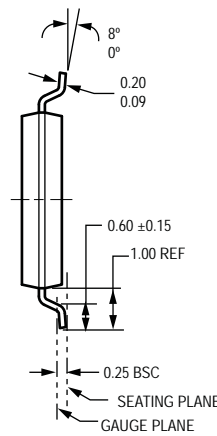
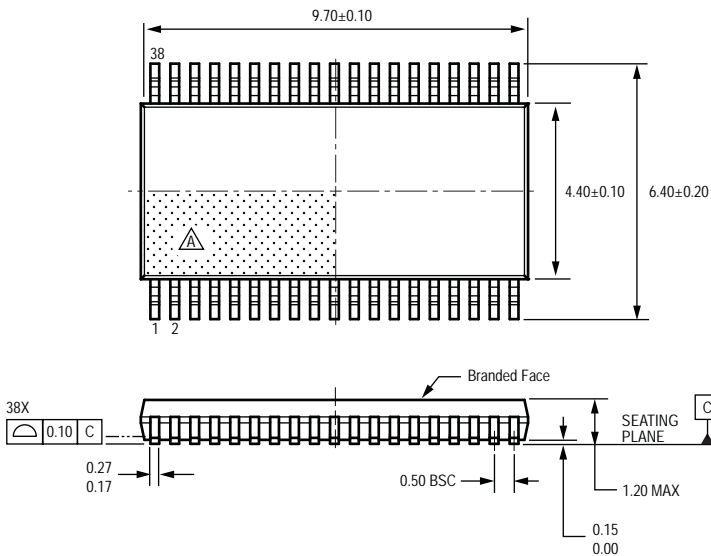


Designator: LD Type: 38-pin, 0.50 mm pin pitch TSSOP



B Standard Branding Reference View

N = Device part number
 A = Supplier emblem
 Y = Last two digits of year of manufacture
 W = Week of manufacture
 L = Lot number

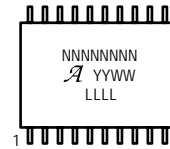
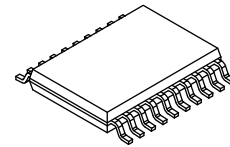
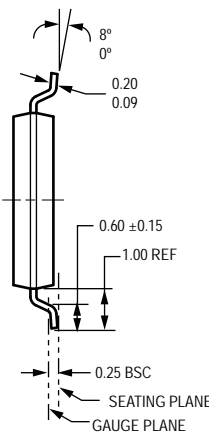
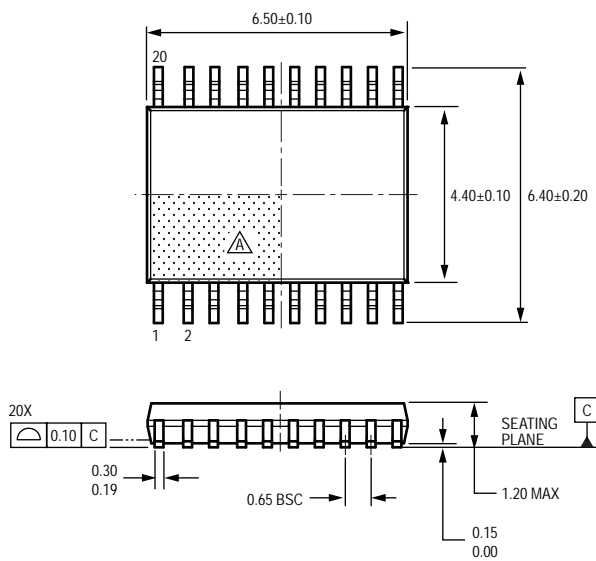
For Reference Only; not for tooling use (reference MO-153 BD-1)
 Dimensions in millimeters
 Dimensions exclusive of mold flash, gate burrs, and dambar protrusions
 Exact case and lead configuration at supplier discretion within limits shown

A Terminal #1 mark area

B Branding scale and appearance at supplier discretion

Designator: LE


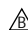
Type: 20-pin, 0.65 mm pin pitch TSSOP



 Standard Branding Reference View

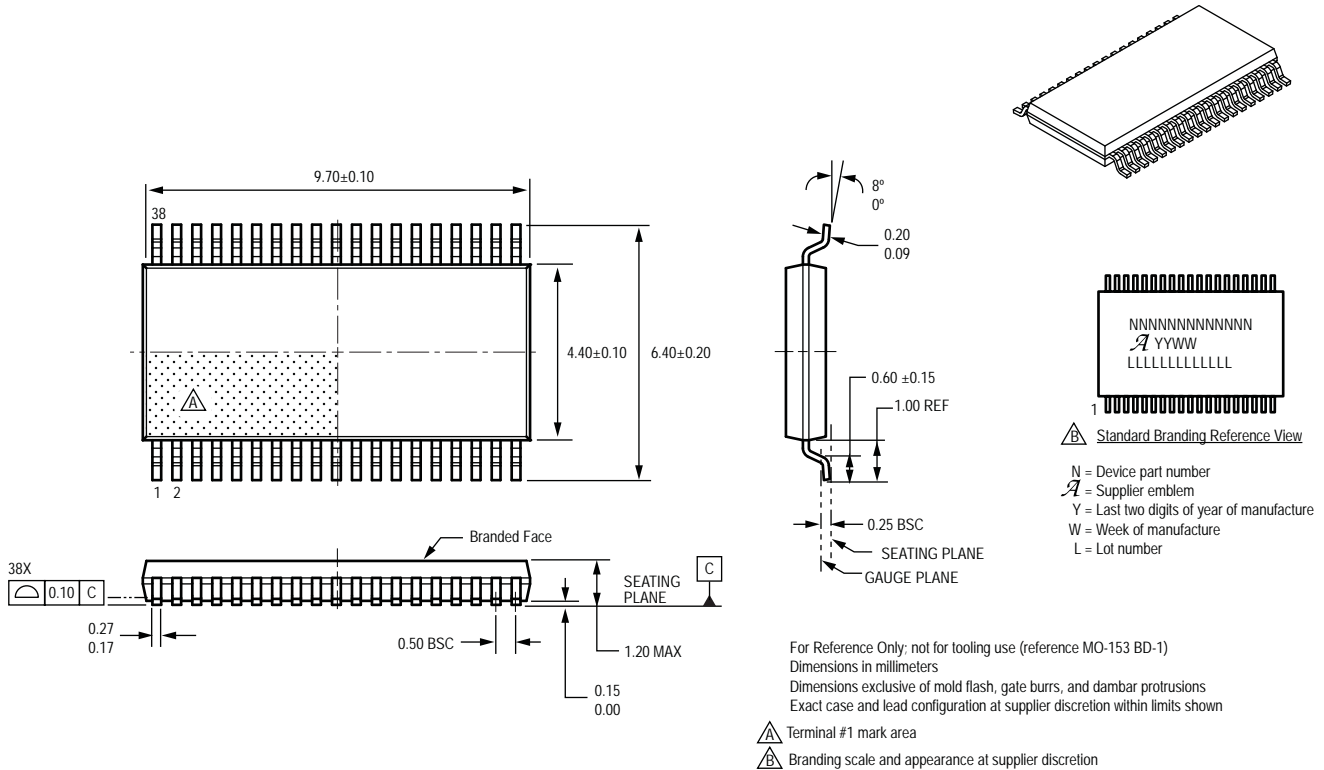
N = Device part number
 A = Supplier emblem
 Y = Last two digits of year of manufacture
 W = Week of manufacture
 L = Characters 5-8 of lot number

For Reference Only; not for tooling use (reference MO-153 AC)
 Dimensions in millimeters
 Dimensions exclusive of mold flash, gate burrs, and dambar protrusions
 Exact case and lead configuration at supplier discretion within limits shown

 Terminal #1 mark area


Designator: LG

Type: 38-pin, 0.50 mm pin pitch TSSOP with internally fused pins for thermal dissipation



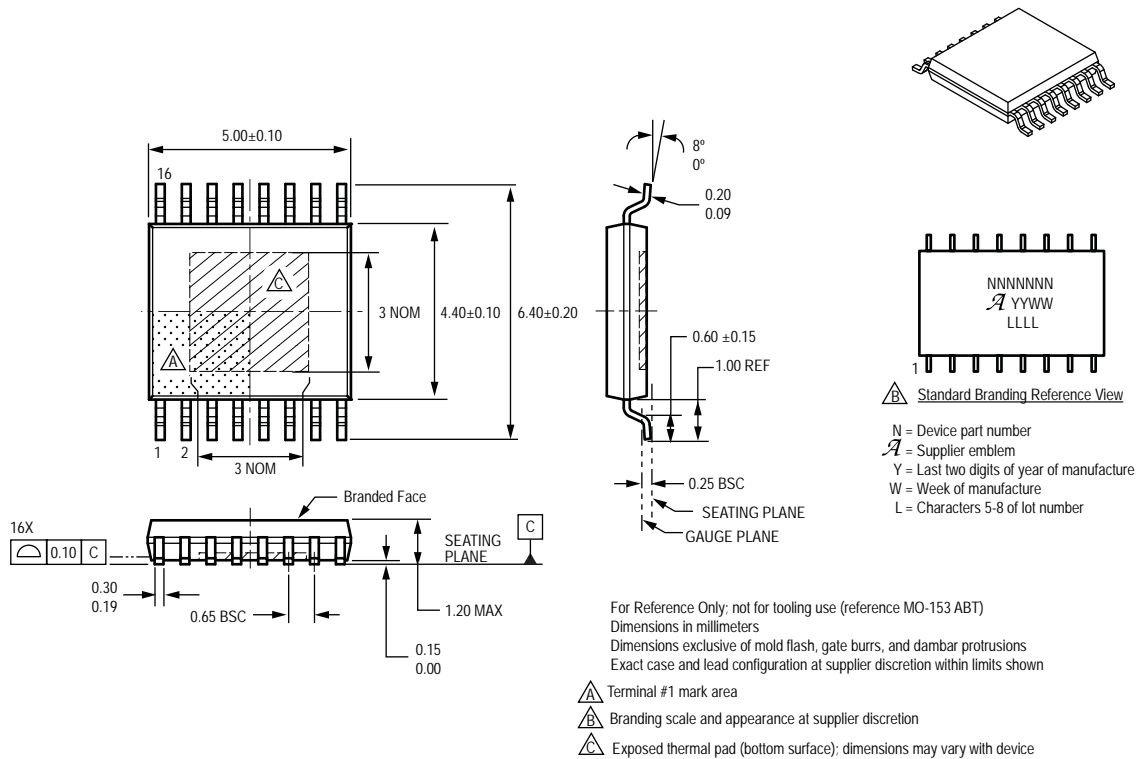
For Reference Only; not for tooling use (reference MO-153 BD-1)
 Dimensions in millimeters
 Dimensions exclusive of mold flash, gate burrs, and dambar protrusions
 Exact case and lead configuration at supplier discretion within limits shown

Internal configuration of fused pins is device-dependent

Copyright ©2008-2010, Allegro MicroSystems, Inc. Drawings are for reference only; not for tooling use. Allegro MicroSystems, Inc. reserves the right to make, from time to time, such departures from the detail specifications as may be required to permit improvements in the performance, reliability, or manufacturability of its products. Before placing an order, the user is cautioned to verify that the information being relied upon is current. The information included herein is believed to be accurate and reliable. However, Allegro MicroSystems, Inc. assumes no responsibility for its use; nor for any infringement of patents or other rights of third parties which may result from its use.

Designator: LP

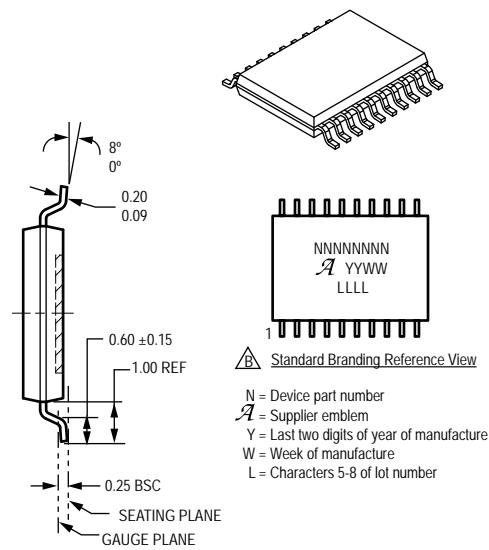
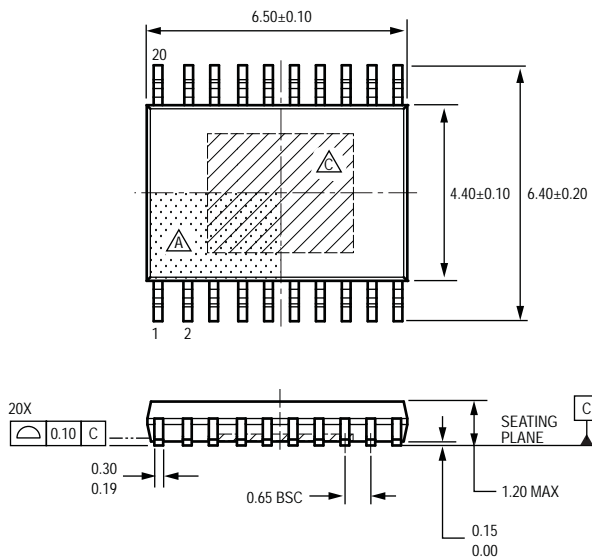
Type: 16-pin, 0.65 mm pin pitch TSSOP with exposed thermal pad



Copyright ©2008-2010, Allegro MicroSystems, Inc. Drawings are for reference only; not for tooling use. Allegro MicroSystems, Inc. reserves the right to make, from time to time, such departures from the detail specifications as may be required to permit improvements in the performance, reliability, or manufacturability of its products. Before placing an order, the user is cautioned to verify that the information being relied upon is current. The information included herein is believed to be accurate and reliable. However, Allegro MicroSystems, Inc. assumes no responsibility for its use; nor for any infringement of patents or other rights of third parties which may result from its use.

Designator: LP

Type: 20-pin, 0.65 mm pin pitch TSSOP with exposed thermal pad



B Standard Branding Reference View

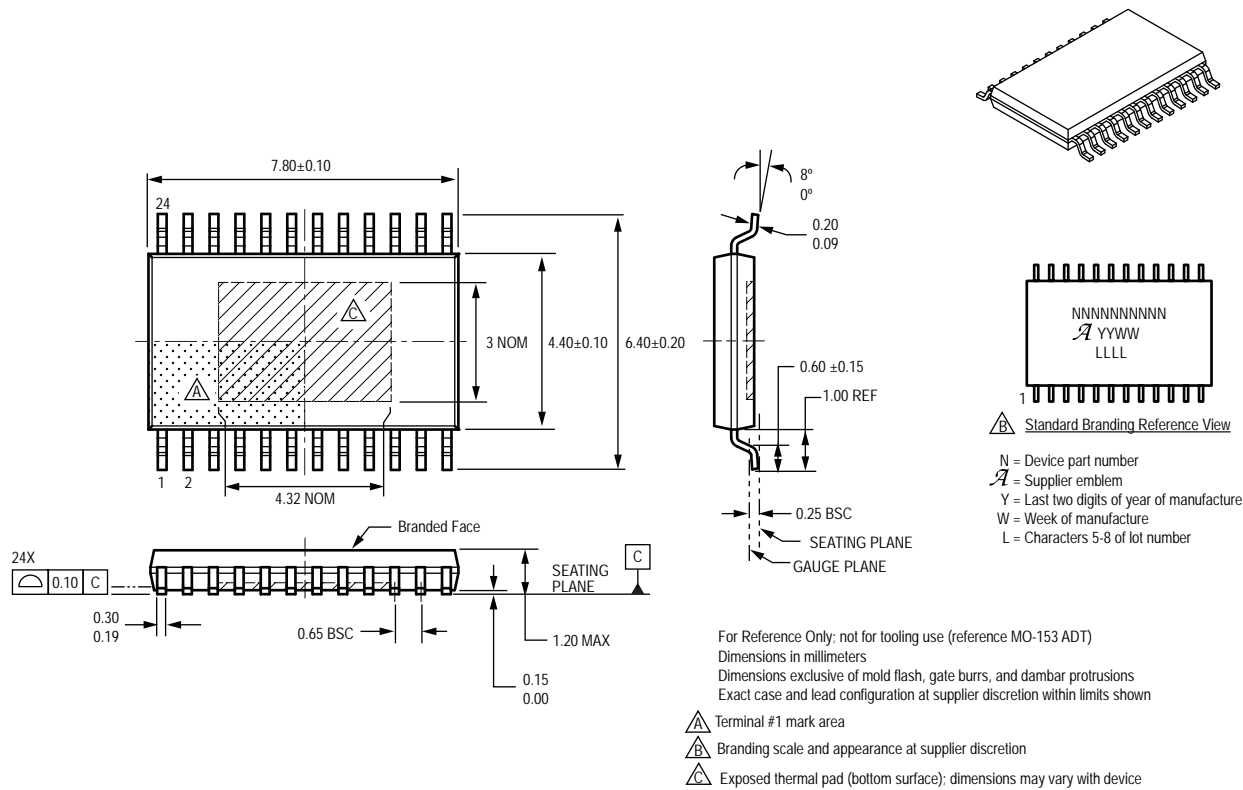
N = Device part number
 A = Supplier emblem
 Y = Last two digits of year of manufacture
 W = Week of manufacture
 L = Characters 5-8 of lot number

For Reference Only; not for tooling use (reference MO-153 ACT)
 Dimensions in millimeters
 Dimensions exclusive of mold flash, gate burrs, and dambar protrusions
 Exact case and lead configuration at supplier discretion within limits shown

- A** Terminal #1 mark area
- B** Branding scale and appearance at supplier discretion
- C** Exposed thermal pad (bottom surface); dimensions may vary with device

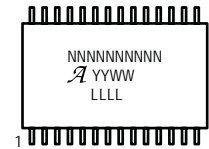
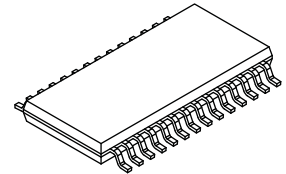
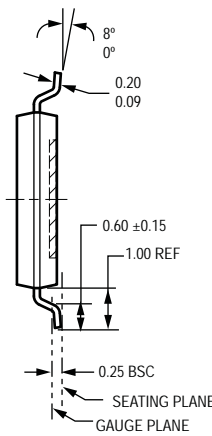
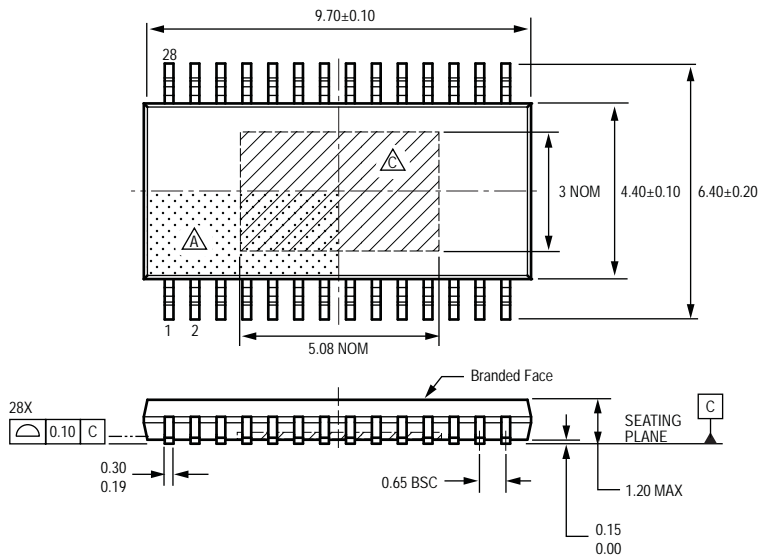
Designator: LP

Type: 24-pin, 0.65 mm pin pitch TSSOP with exposed thermal pad



Designator: LP

Type: 28-pin, 0.65 mm pin pitch TSSOP with exposed thermal pad



B Standard Branding Reference View

N = Device part number
 A = Supplier emblem
 Y = Last two digits of year of manufacture
 W = Week of manufacture
 L = Characters 5-8 of lot number

For Reference Only; not for tooling use (reference MO-153 AET)
 Dimensions in millimeters
 Dimensions exclusive of mold flash, gate burrs, and dambar protrusions
 Exact case and lead configuration at supplier discretion within limits shown

- A** Terminal #1 mark area
- B** Branding scale and appearance at supplier discretion
- C** Exposed thermal pad (bottom surface); dimensions may vary with device