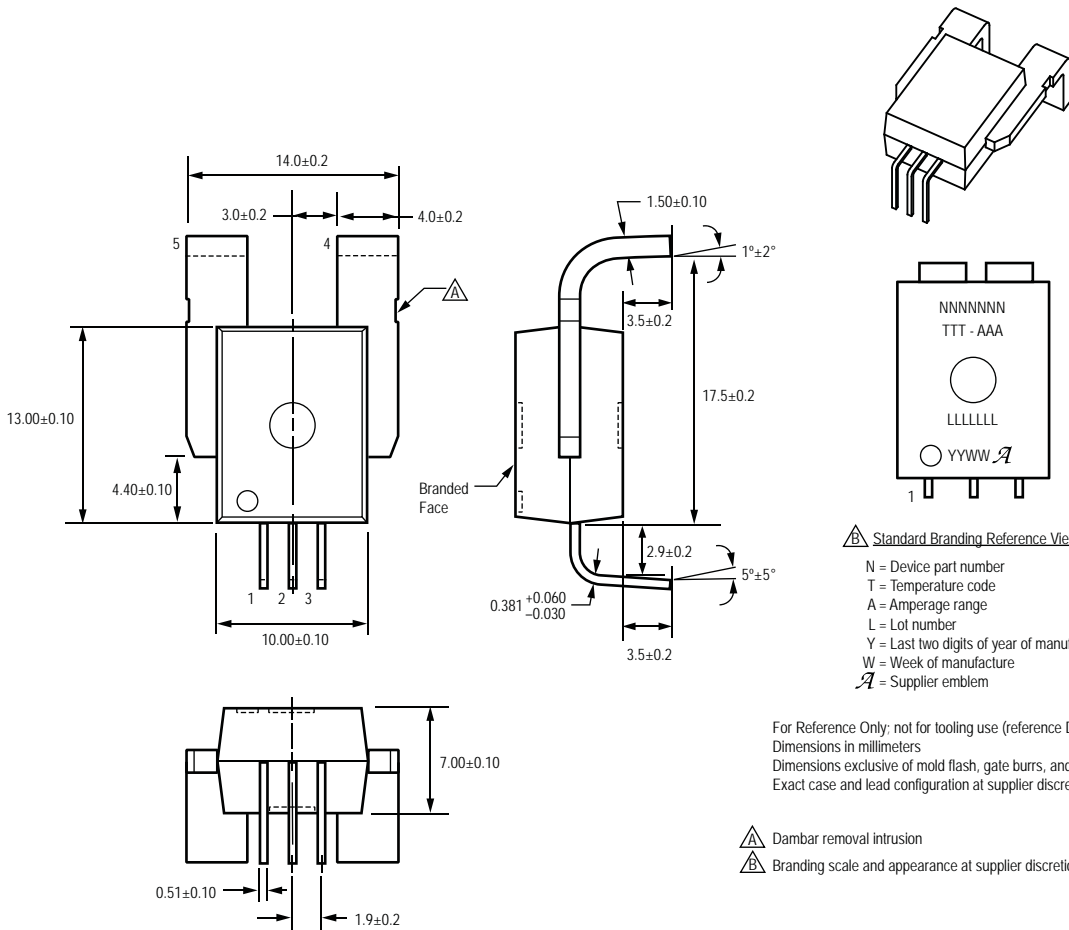


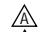

Designator: CA and CB Type: 3-pin with 2 current path terminals, PFF leadform



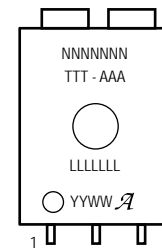
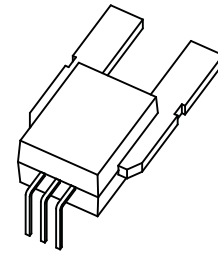
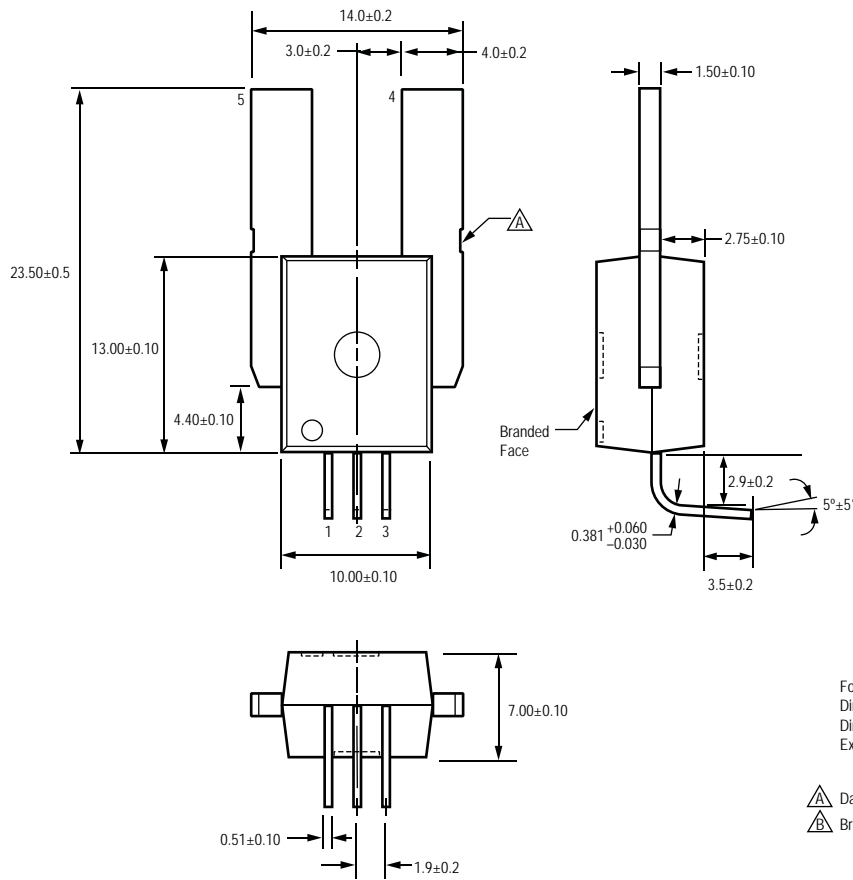
Standard Branding Reference View

- N = Device part number
- T = Temperature code
- A = Amperage range
- L = Lot number
- Y = Last two digits of year of manufacture
- W = Week of manufacture
- \mathcal{A} = Supplier emblem

For Reference Only; not for tooling use (reference DWG-9111, DWG-9110)
Dimensions in millimeters
Dimensions exclusive of mold flash, gate burrs, and dambar protrusions
Exact case and lead configuration at supplier discretion within limits shown

-  Dambar removal intrusion
-  Branding scale and appearance at supplier discretion

Designator: CA and CB Type: 3-pin with 2 current path terminals, PSF leadform



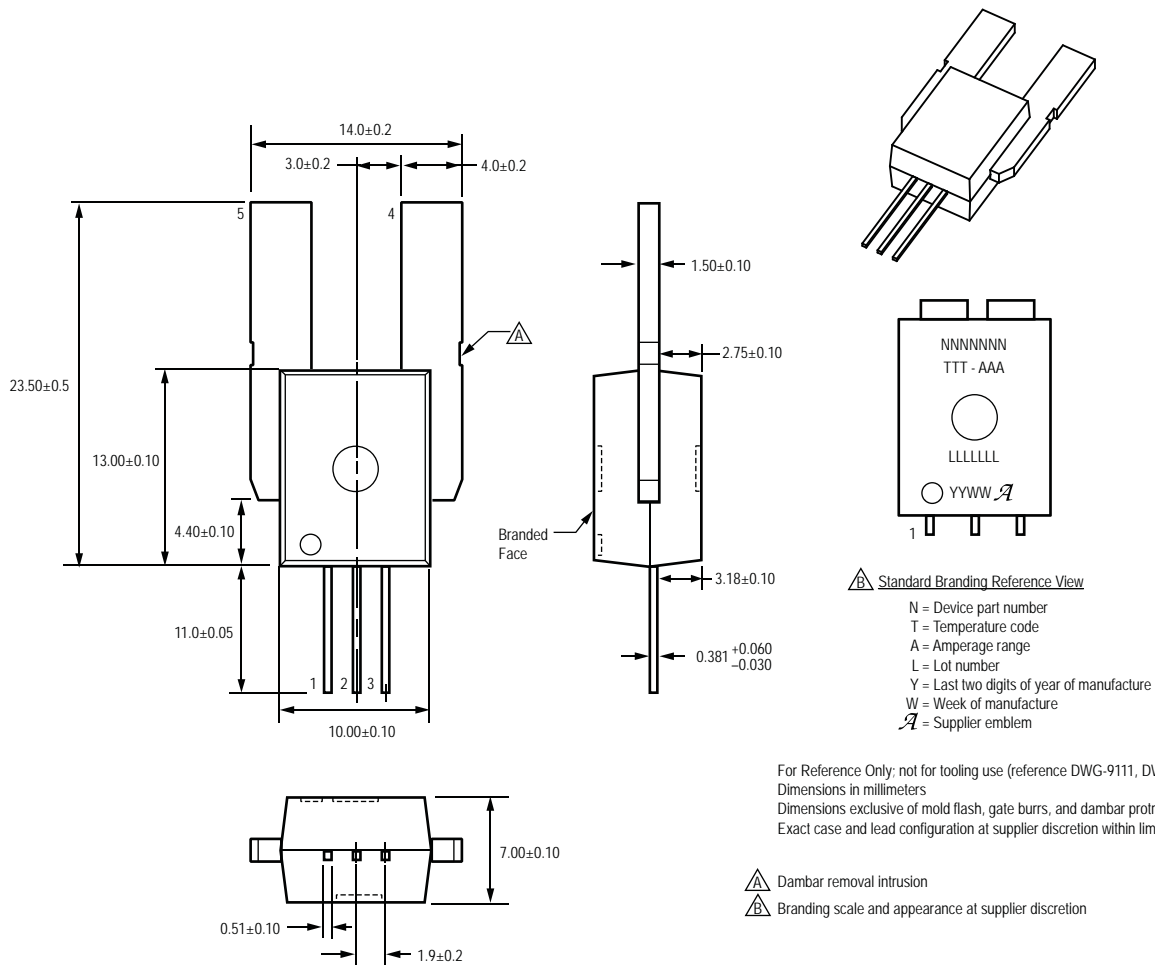
Standard Branding Reference View

N = Device part number
T = Temperature code
A = Amperage range
L = Lot number
Y = Last two digits of year of manufacture
W = Week of manufacture
 \mathcal{A} = Supplier emblem

For Reference Only: not for tooling use (reference DWG-9111, DWG-9110)
Dimensions in millimeters
Dimensions exclusive of mold flash, gate burrs, and dambar protrusions
Exact case and lead configuration at supplier discretion within limits shown

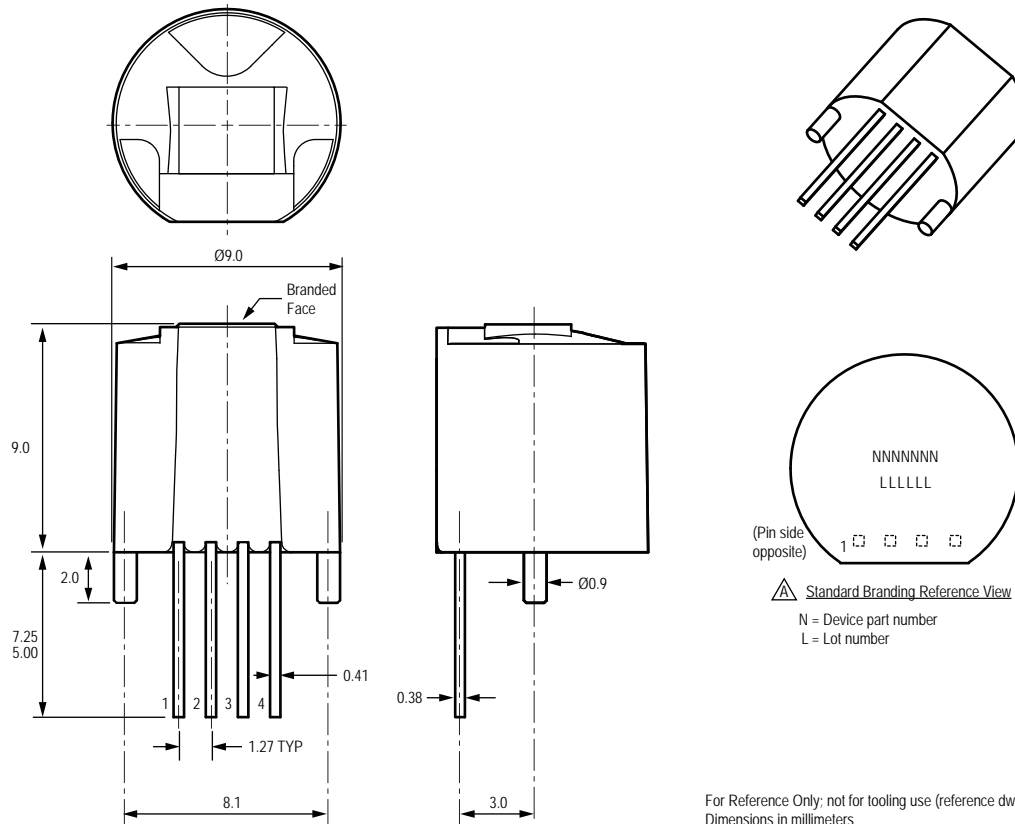
- \triangle Dambar removal intrusion
- \triangle Branding scale and appearance at supplier discretion

Designator: CA and CB Type: 3-pin with 2 current path terminals, PSS leadform



Copyright ©2008-2010, Allegro MicroSystems, Inc. Drawings are for reference only; not for tooling use. Allegro MicroSystems, Inc. reserves the right to make, from time to time, such departures from the detail specifications as may be required to permit improvements in the performance, reliability, or manufacturability of its products. Before placing an order, the user is cautioned to verify that the information being relied upon is current. The information included herein is believed to be accurate and reliable. However, Allegro MicroSystems, Inc. assumes no responsibility for its use; nor for any infringement of patents or other rights of third parties which may result from its use.

Designator: SA
Type: 4-pin SIP

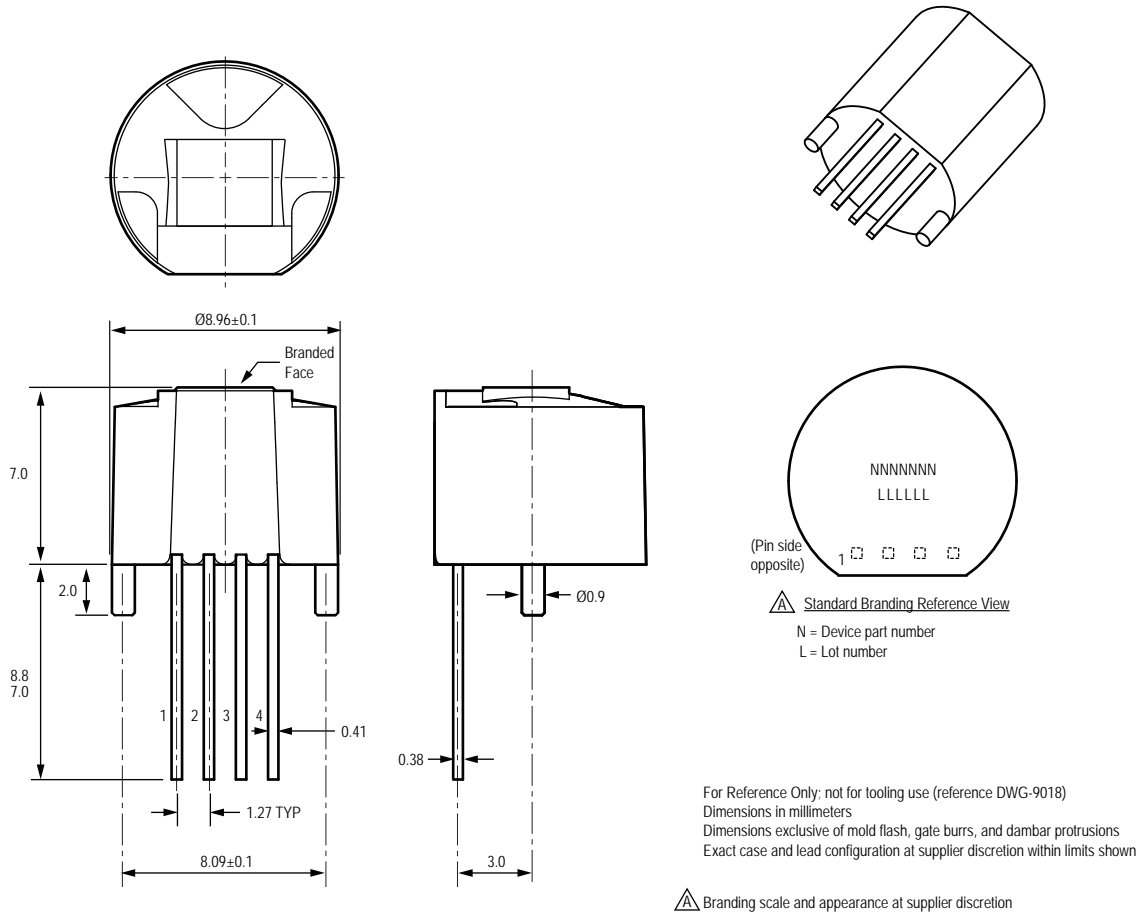


Standard Branding Reference View
 N = Device part number
 L = Lot number

For Reference Only; not for tooling use (reference dwg. 52-9000-0048)
 Dimensions in millimeters
 Dimensions exclusive of mold flash, gate burrs, and dambar protrusions
 Exact case and lead configuration at supplier discretion within limits shown

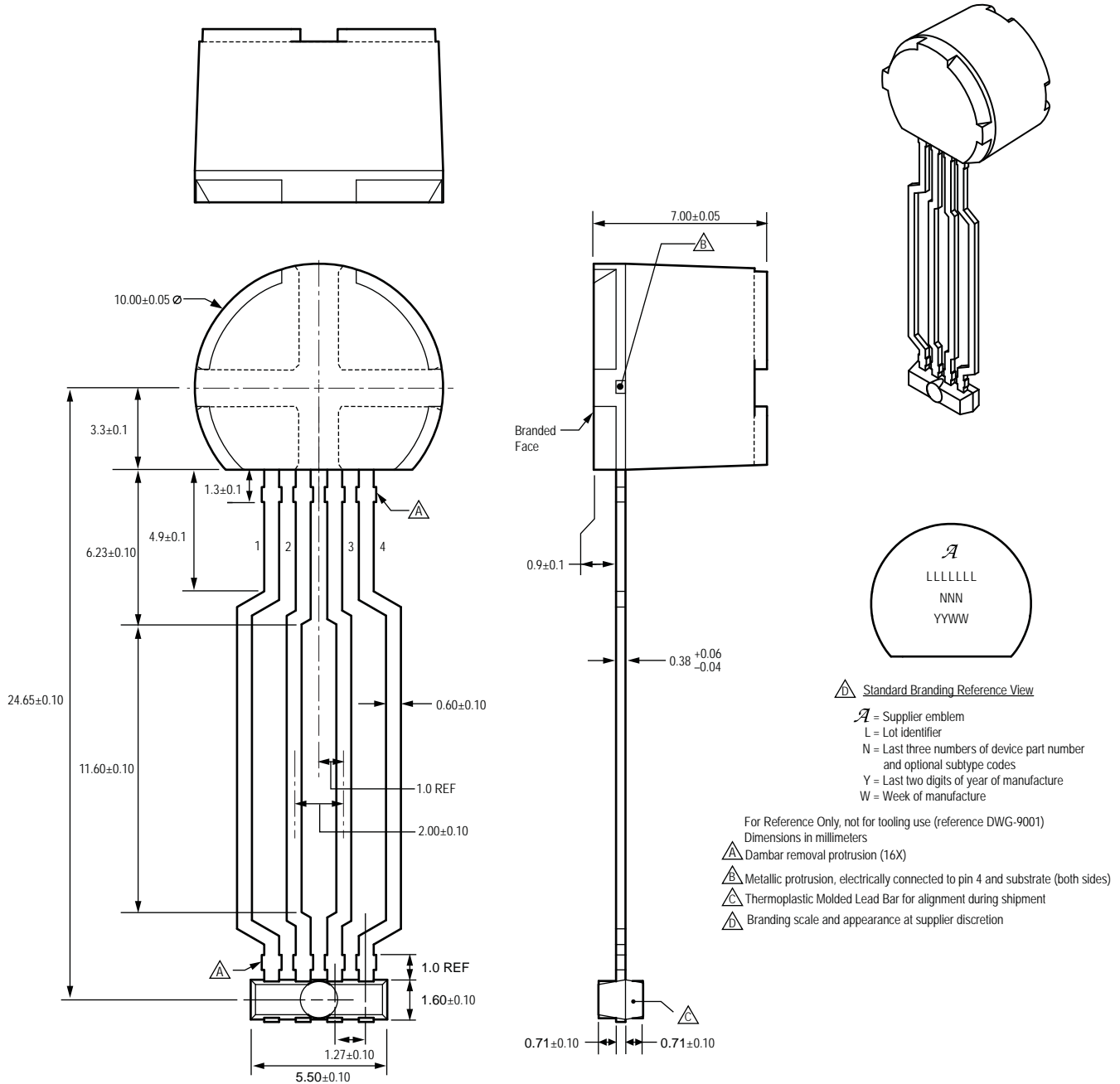
Branding scale and appearance at supplier discretion

Designator: SB
Type: 4-pin SIP



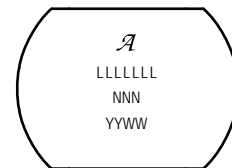
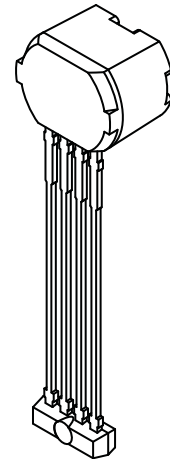
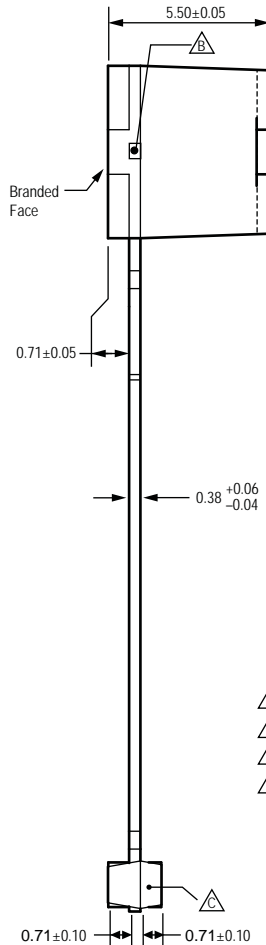
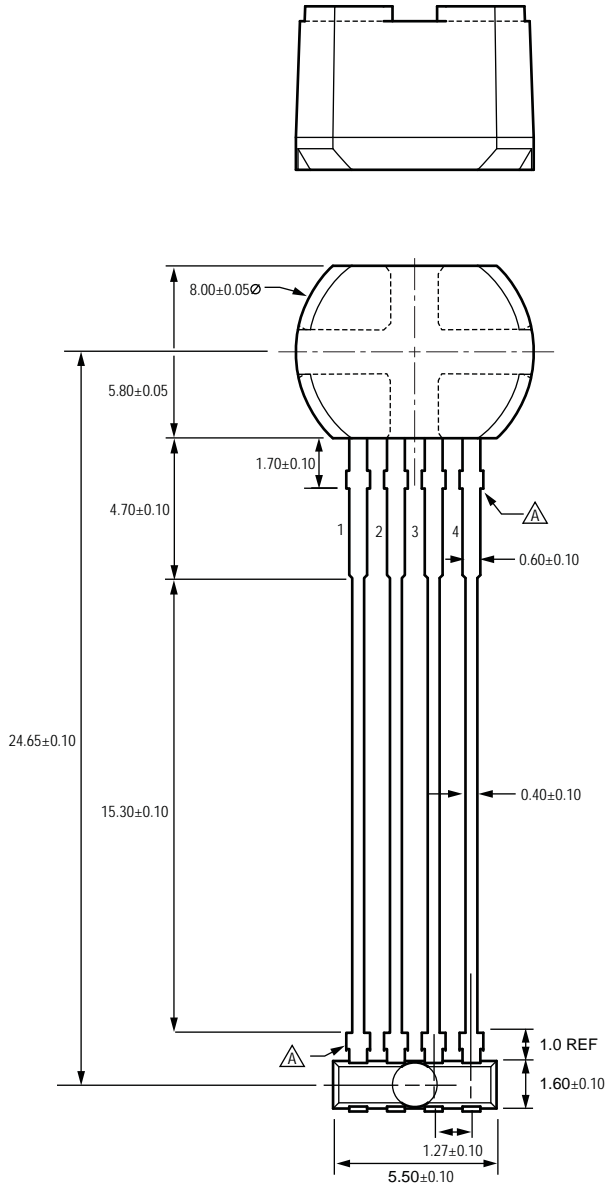
Copyright ©2008-2010, Allegro MicroSystems, Inc. Drawings are for reference only; not for tooling use. Allegro MicroSystems, Inc. reserves the right to make, from time to time, such departures from the detail specifications as may be required to permit improvements in the performance, reliability, or manufacturability of its products. Before placing an order, the user is cautioned to verify that the information being relied upon is current. The information included herein is believed to be accurate and reliable. However, Allegro MicroSystems, Inc. assumes no responsibility for its use; nor for any infringement of patents or other rights of third parties which may result from its use.

Designator: SE
Type: 4-pin SIP



Copyright ©2008-2010, Allegro MicroSystems, Inc. Drawings are for reference only; not for tooling use. Allegro MicroSystems, Inc. reserves the right to make, from time to time, such departures from the detail specifications as may be required to permit improvements in the performance, reliability, or manufacturability of its products. Before placing an order, the user is cautioned to verify that the information being relied upon is current. The information included herein is believed to be accurate and reliable. However, Allegro MicroSystems, Inc. assumes no responsibility for its use; nor for any infringement of patents or other rights of third parties which may result from its use.


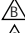


Designator: SG
Type: 4-pin SIP

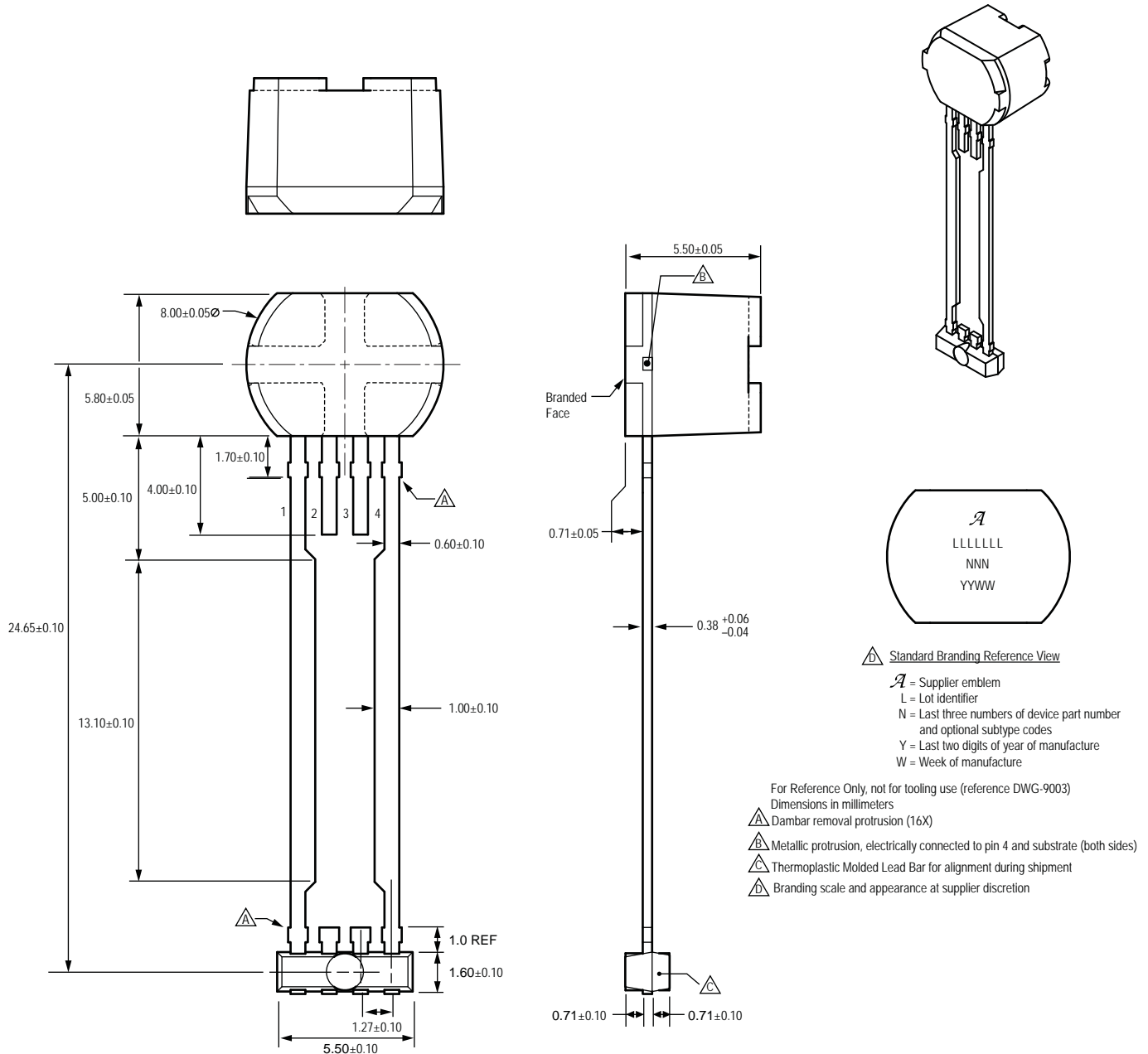


Standard Branding Reference View

A = Supplier emblem
 L = Lot identifier
 N = Last three numbers of device part number and optional subtype codes
 Y = Last two digits of year of manufacture
 W = Week of manufacture

For Reference Only, not for tooling use (reference DWG-9002)
 Dimensions in millimeters

-  Dambar removal protrusion (16X)
-  Metallic protrusion, electrically connected to pin 4 and substrate (both sides)
-  Thermoplastic Molded Lead Bar for alignment during shipment
-  Branding scale and appearance at supplier discretion



Copyright ©2008-2010, Allegro MicroSystems, Inc. Drawings are for reference only; not for tooling use. Allegro MicroSystems, Inc. reserves the right to make, from time to time, such departures from the detail specifications as may be required to permit improvements in the performance, reliability, or manufacturability of its products. Before placing an order, the user is cautioned to verify that the information being relied upon is current. The information included herein is believed to be accurate and reliable. However, Allegro MicroSystems, Inc. assumes no responsibility for its use; nor for any infringement of patents or other rights of third parties which may result from its use.

