

ASEK711, Board, EVB

85-0595-001-FAB  
Originator: S. Upton

FAB Drawing

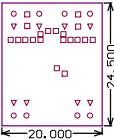
Rev 2  
5/22/2012

Layer Stack Up Detail for: 85-0595-001 R1.PCBD0C

Layer Name	Gerber Document	Copper Thickness
Top Solder Mask	(.GTS)	
TopLayer	(.GTL)	2.8mil
BottomLayer	(.GBL)	2.8mil
Bottom Solder Mask(.GBS)		

Mechanical Layer 1 \*.qml is Board Outline, slots and circular cutouts  
Mechanical Layer 2 \*.qnl is footprint notes (not for fab house)  
Mechanical Layer 3 \*.qnl is hole location guide  
Mechanical Layer 4 \*.qnl is board outline dimensions  
Mechanical Layer 5 \*.qnl is topside labels (if no silk)  
Mechanical Layer 6 \*.qnl is bottomside labels (if no silk)  
Mechanical Layer 7 \*.qnl is FAB drawing notes  
Mechanical Layer 8 and up are not for usage by PCB board house  
\*.qto and \*.qbo are top and bottom layer silkscreen (aka overlay)  
\*.qts and \*.qbs are top and bottom soldermask  
\*.drl is NC Drill  
\*.apr is aperture file  
\*.qpb and \*.qpt are pad master layers, and are not used (ignore if in zip file)  
Keepout layer \*.qko is for internal usage only, and is not to be used by board house

1. Finished PCB is RoHS
2. Dimensions are in millimeters, unless otherwise noted.
3. Applicable Standards:
  - 3a. Manufacture in accordance to IPC-6011, IPC-6012.
  - 3b. UL Approved to a minimum category of 94V0.
4. Laminate:
  - 4a. Thickness: 0.062inch
  - 4b. Type: FR4
5. Copper:
  - 5a. Layer Count: 2
  - 5b. Exterior layers: 2oz
  - 5c. Interior layers: N/A
  - 5d. Plated through holes: plate to 1mil min copper thickness
  - 5e. Trace separation: 5mil
  - 5f. Trace min width: 10mil
6. Surface Finish:
  - 6a. Immersion Gold
  - 6b. This line left intentionally blank.
7. Soldermask:
  - 7a. Top/Bottom soldermask required
  - 7b. Soldermask color shall be green.
8. Silkscreen:
  - 8a. Top/bottom silkscreen required.
  - 8b. Silkscreen color shall be white.
  - 8c. Min silkscreen line width: 6mil
  - 8d. Epoxy or acrylic ink allowed
9. Drill holes:
  - 9a. No blind or buried vias.
  - 9b. Hole sizes are specified after plating.
10. Mill separate or V-score according to mech1 (\*.q1) layer.
11. Contact information:
  - 11a. Shawn Upton, [supton@allegromicro.com](mailto:supton@allegromicro.com), 603.626.2429
  - 11b. If fast turn board, 24hr contact info:  
Shawn Upton, 603.748.4650 (cell)



Symbol	Hit Count	Tool Size	Plated	Hole Type
□	20	15mil (0.381mm)	PTH	Round
○	8	24mil (0.61mm)	PTH	Round
▽	8	36mil (0.914mm)	PTH	Round
	36 Total			

