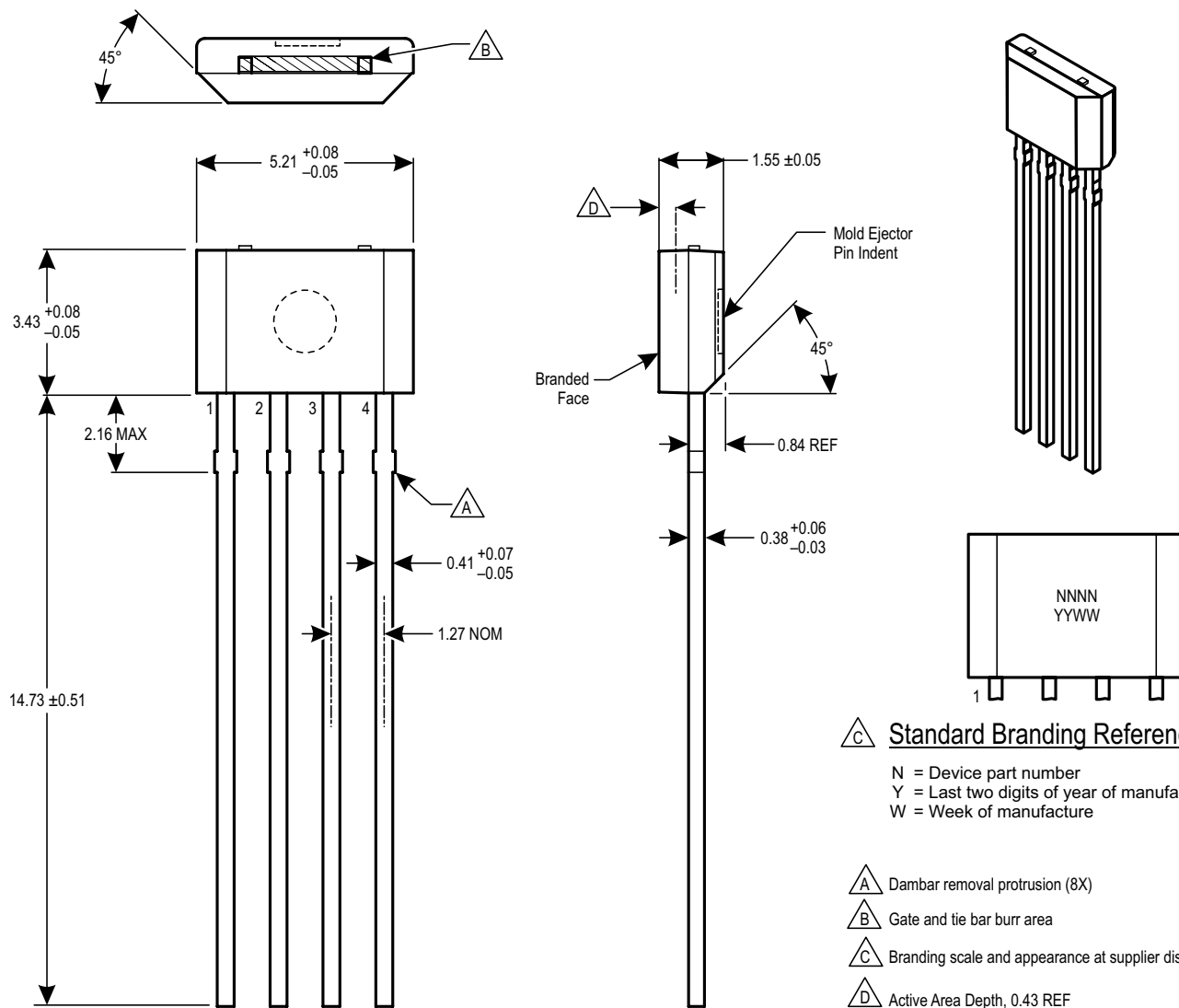


For Reference Only – Not for Tooling Use

(Reference DWG-9010)

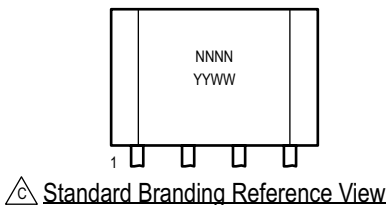
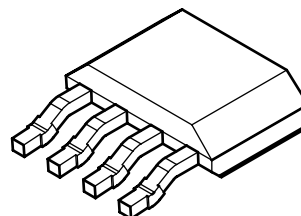
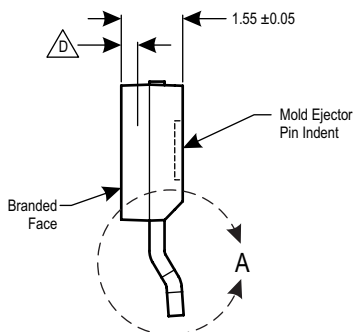
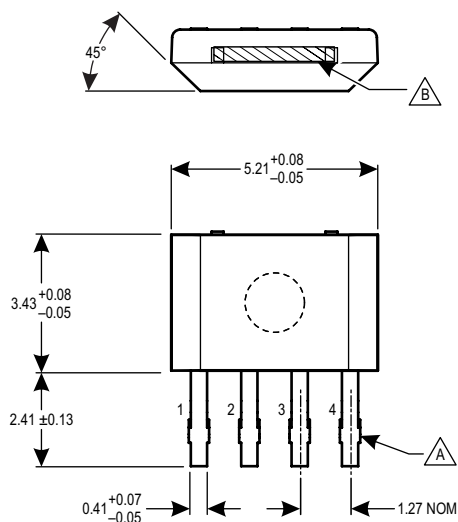
Dimensions in millimeters – NOT TO SCALE
Dimensions exclusive of mold flash, gate burrs and dambar protrusions
Exact case and lead dimensions at supplier discretion within limits shown



For Reference Only – Not for Tooling Use

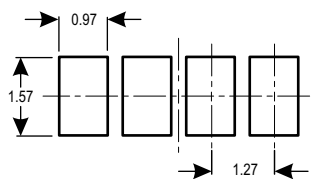
(Reference DWG-9010)

Dimensions in millimeters – NOT TO SCALE
Dimensions exclusive of mold flash, gate burrs and dambar protrusions
Exact case and lead dimensions at supplier discretion within limits shown

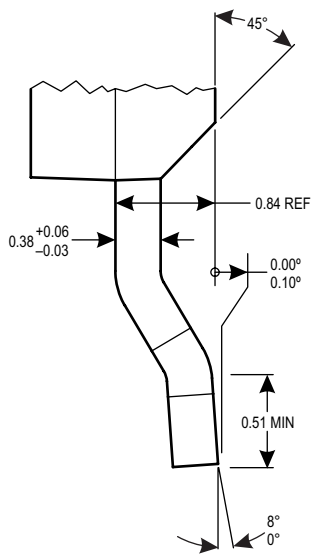


C Standard Branding Reference View

N = Device part number
Y = Last two digits of year of manufacture
W = Week of manufacture



E PCB Layout Reference View



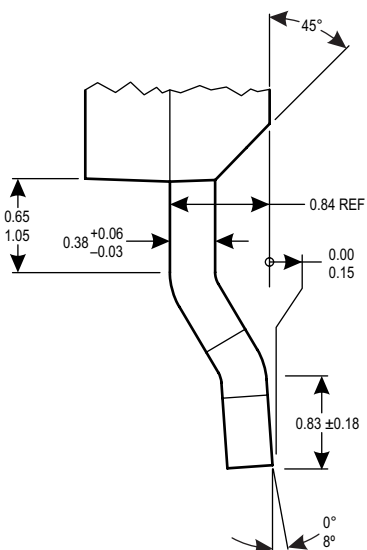
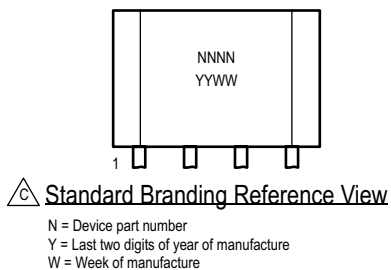
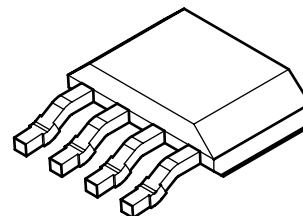
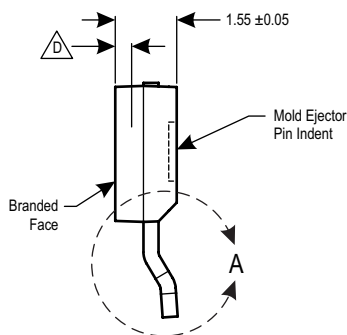
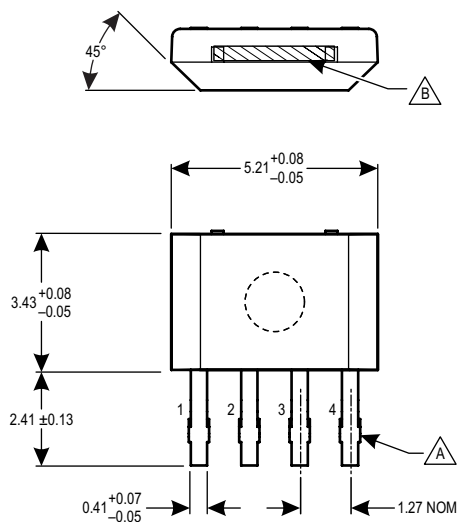
Detail A






- A** Dambar removal protrusion (8X)
- B** Gate and tie bar burr area
- C** Branding scale and appearance at supplier discretion
- D** Active Area Depth, 0.43 mm REF
- E** Reference land pattern layout;
All pads a minimum of 0.20 mm from all adjacent pads;
adjust as necessary to meet application process
requirements and PCB layout tolerances

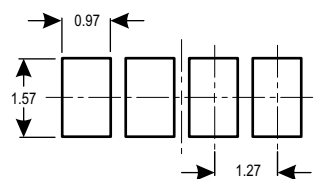
For Reference Only – Not for Tooling Use

(Reference DWG-9010)

Dimensions in millimeters – NOT TO SCALE
Dimensions exclusive of mold flash, gate burrs and dambar protrusions
Exact case and lead dimensions at supplier discretion within limits shown



-  Dambar removal protrusion (8X)
-  Gate and tie bar burr area
-  Branding scale and appearance at supplier discretion
-  Active Area Depth, 0.43 mm REF
-  Reference land pattern layout; all pads a minimum of 0.20 mm from all adjacent pads; adjust as necessary to meet application process requirements and PCB layout tolerances



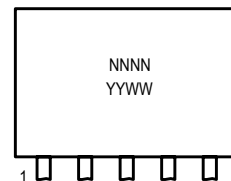
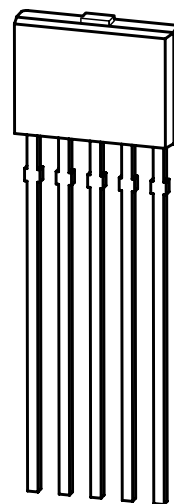
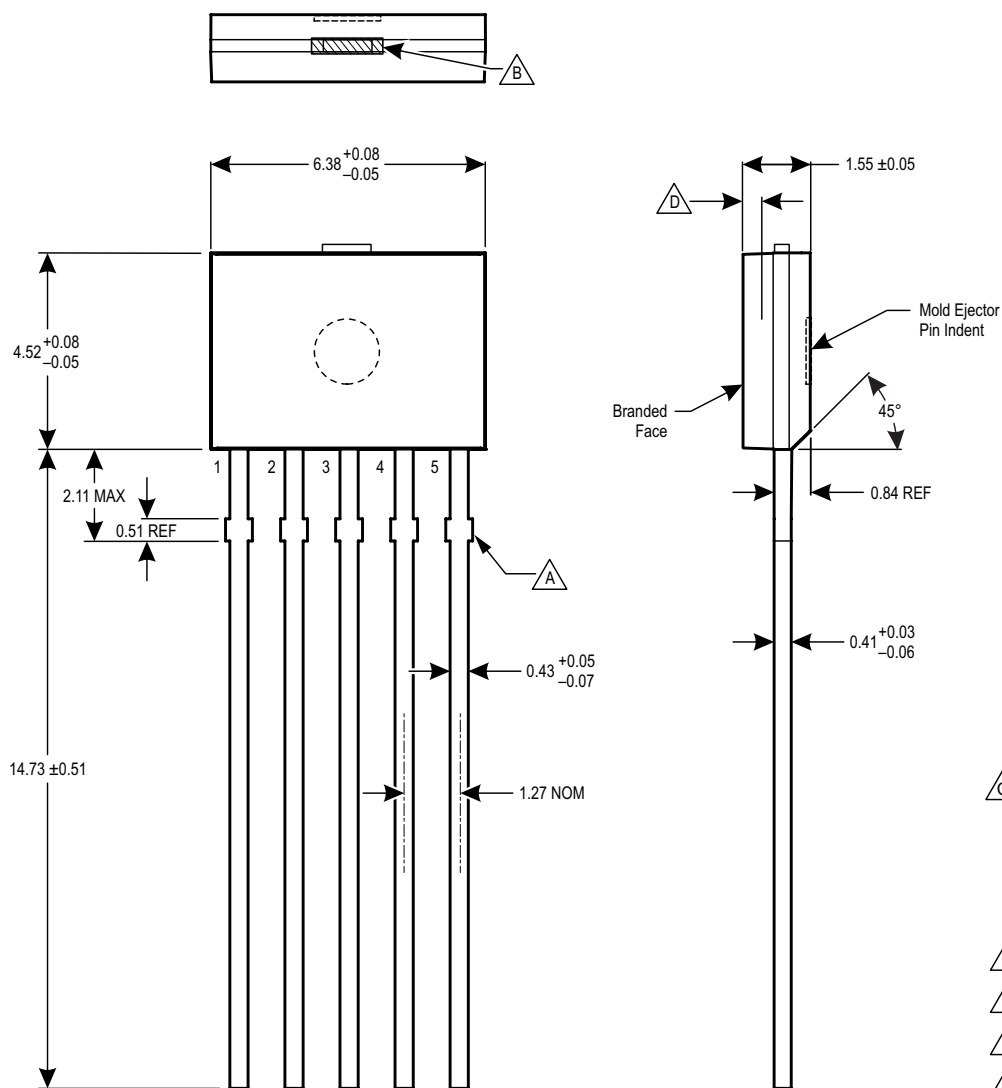
PCB Layout Reference View

Detail A

For Reference Only – Not for Tooling Use


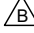
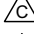
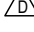
(Reference DWG-9051)

Dimensions in millimeters – NOT TO SCALE
Dimensions exclusive of mold flash, gate burrs and dambar protrusions
Exact case and lead dimensions at supplier discretion within limits shown



C Standard Branding Reference View

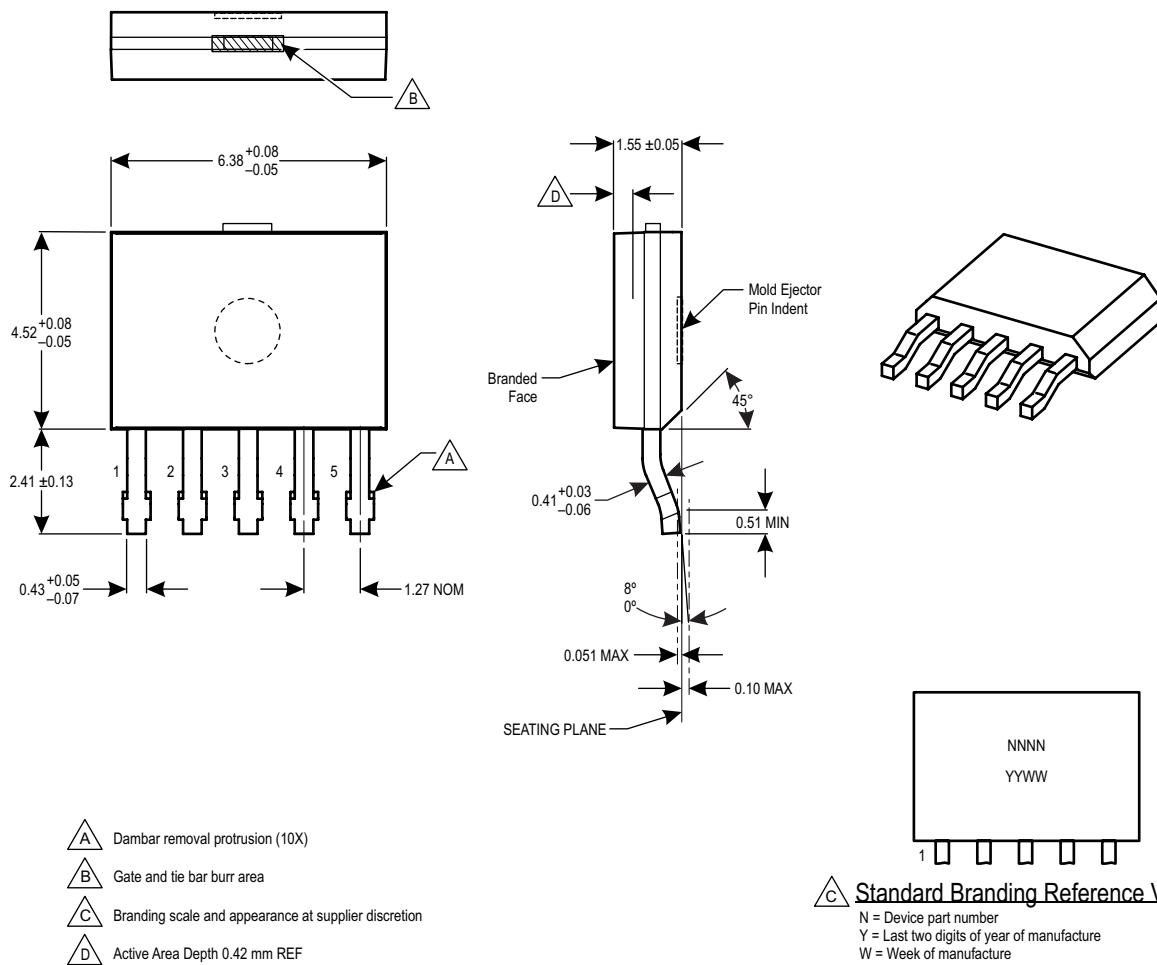
N = Device part number
Y = Last two digits of year of manufacture
W = Week of manufacture

-  Dambar removal protrusion (10X)
-  Gate burr area
-  Branding scale and appearance at supplier discretion
-  Active Area Depth 0.42 mm REF

For Reference Only – Not for Tooling Use

(Reference DWG-9051)

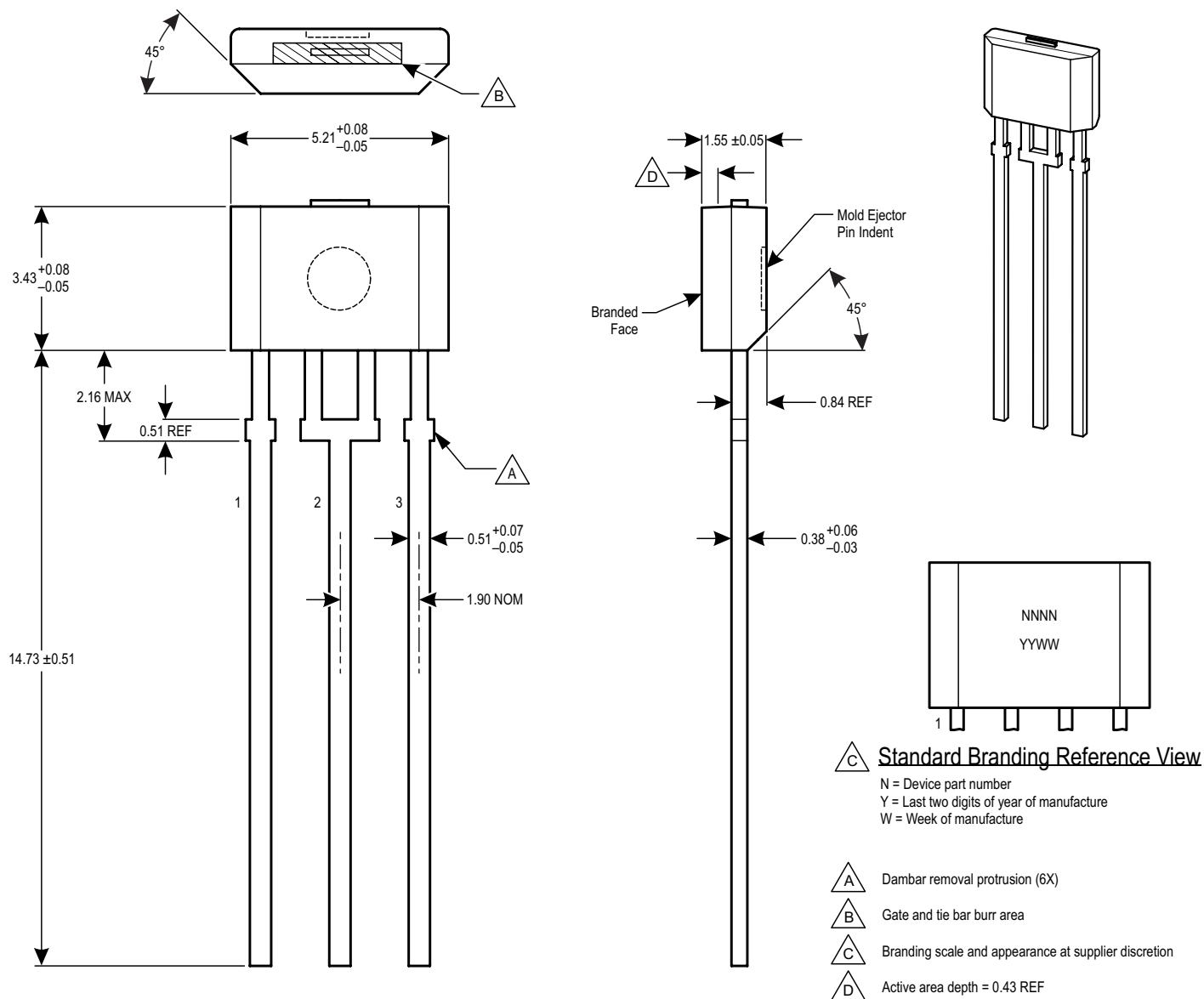
Dimensions in millimeters – NOT TO SCALE
Dimensions exclusive of mold flash, gate burrs and dambar protrusions
Exact case and lead dimensions at supplier discretion within limits shown



For Reference Only – Not for Tooling Use

(Reference DWG-9009)

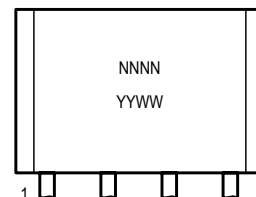
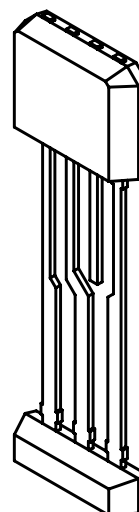
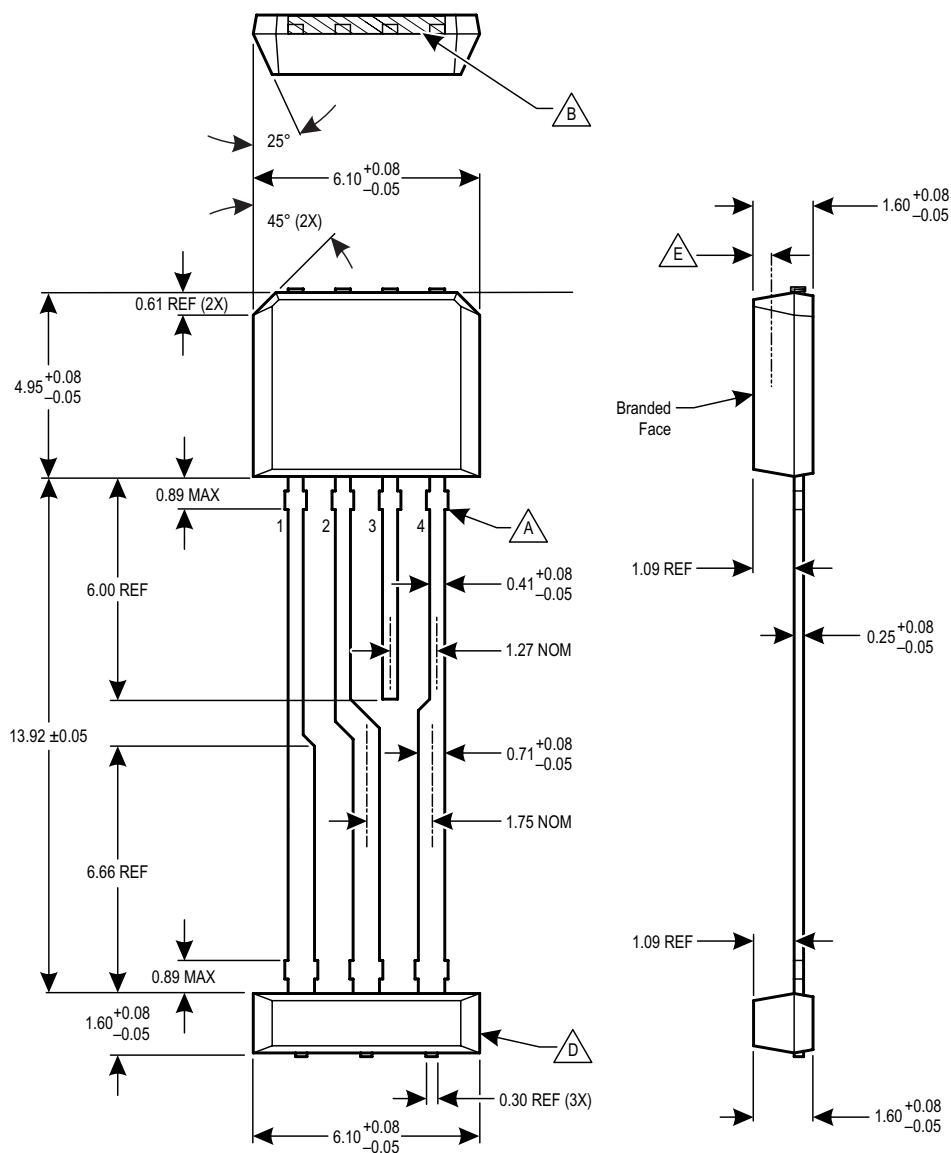
Dimensions in millimeters – NOT TO SCALE
Dimensions exclusive of mold flash, gate burrs and dambar protrusions
Exact case and lead dimensions at supplier discretion within limits shown



For Reference Only – Not for Tooling Use


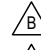
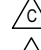
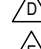
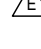
(Reference DWG-9203)

Dimensions in millimeters – NOT TO SCALE
 Dimensions exclusive of mold flash, gate burrs and dambar protrusions
 Exact case and lead dimensions at supplier discretion within limits shown



Standard Branding Reference View

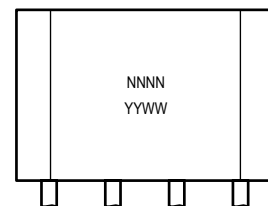
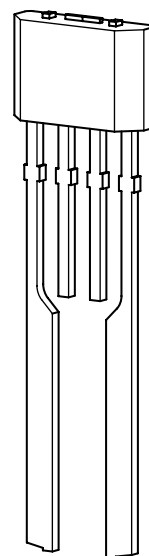
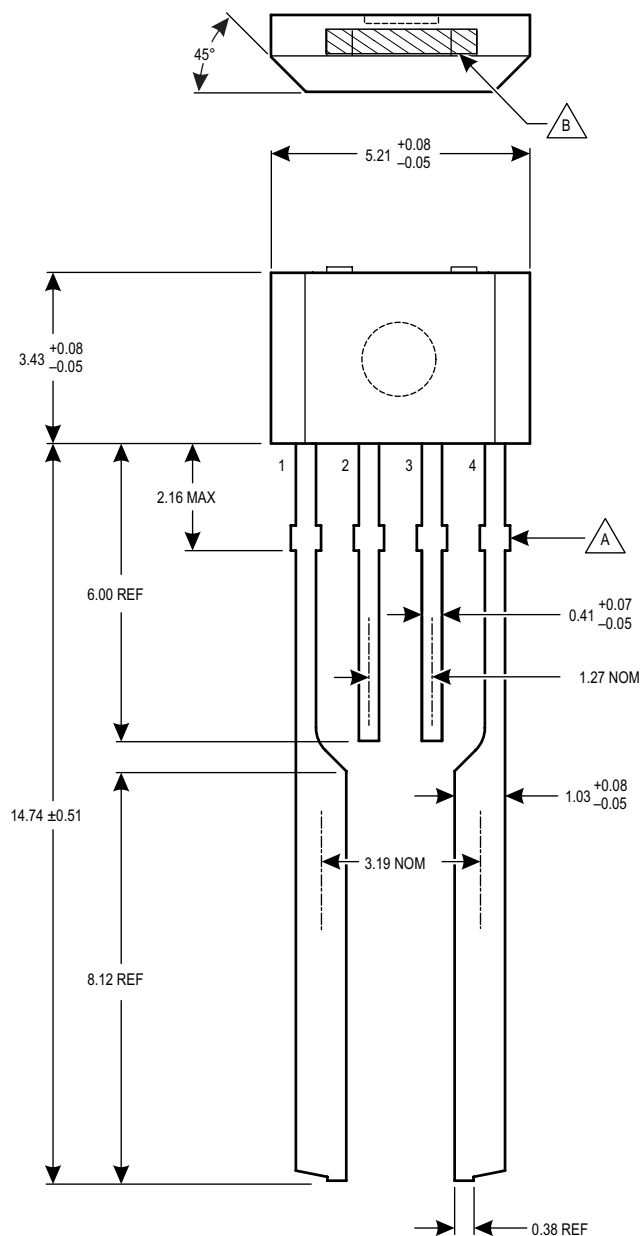
N = Device part number
 Y = Last two digits of year of manufacture
 W = Week of manufacture

-  Dambar removal protrusion (16X)
-  Gate and tie bar burr area
-  Branding scale and appearance at supplier discretion
-  Molded Lead Bar
-  Active Area Depth, 0.43 mm REF

For Reference Only – Not for Tooling Use


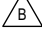
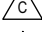
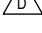
(Reference DWG-9015)

Dimensions in millimeters – NOT TO SCALE
Dimensions exclusive of mold flash, gate burrs and dambar protrusions
Exact case and lead dimensions at supplier discretion within limits shown



Standard Branding Reference View

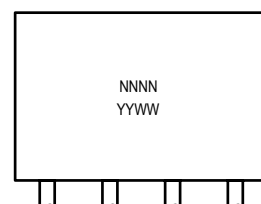
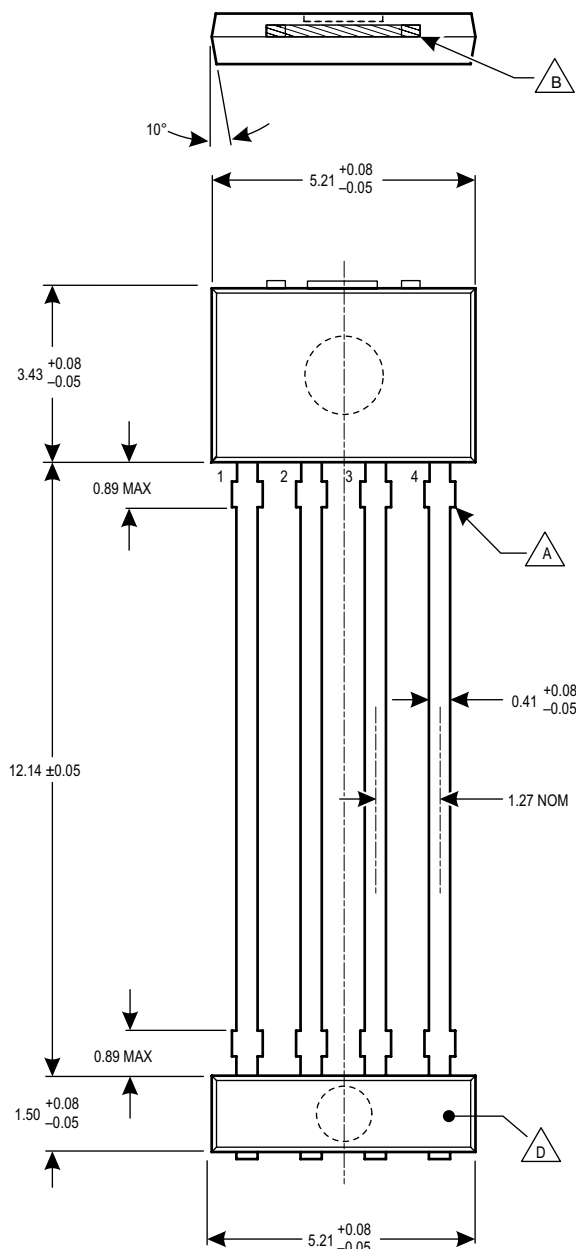
N = Device part number
Y = Last two digits of year of manufacture
W = Week of manufacture

-  Dambar removal protrusion (8X)
-  Gate and tie bar burr area
-  Branding scale and appearance at supplier discretion
-  Active Area Depth 0.43 mm REF

For Reference Only – Not for Tooling Use


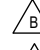
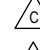
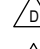
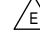
(Reference DWG-9202)

Dimensions in millimeters – NOT TO SCALE
Dimensions exclusive of mold flash, gate burrs and dambar protrusions
Exact case and lead dimensions at supplier discretion within limits shown



Standard Branding Reference View

N = Device part number
Y = Last two digits of year of manufacture
W = Week of manufacture

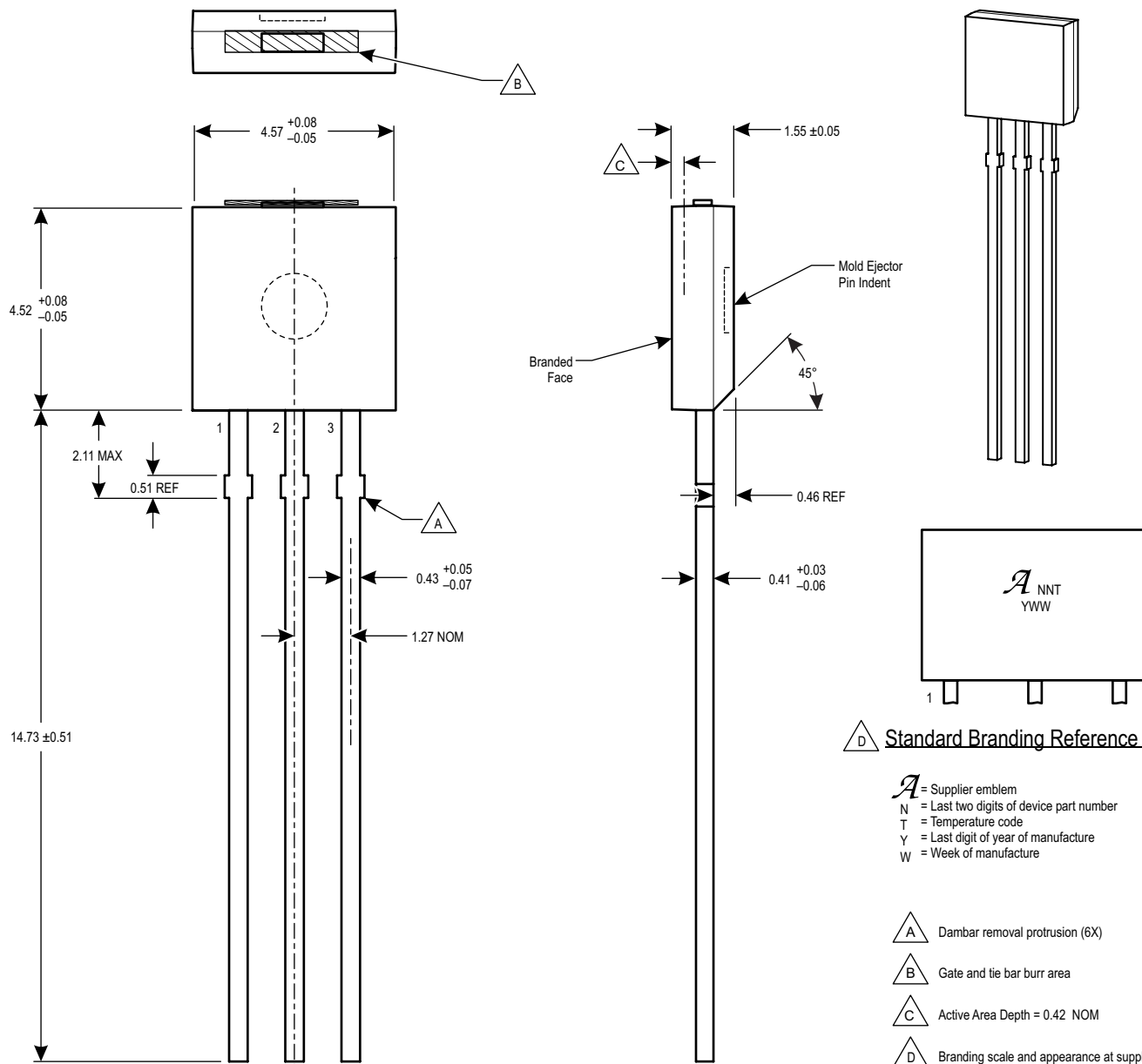
-  Dambar removal protrusion (16X)
-  Gate and tie burr area
-  Branding scale and appearance at supplier discretion
-  Molded Lead Bar
-  Active Area Depth, 0.37 mm REF

Copyright ©2008-2013, Allegro MicroSystems, LLC drawings are for reference only; not for tooling use. Refer to the individual datasheet for information on a specific product package. Allegro MicroSystems, LLC reserves the right to make, from time to time, such departures from the detail specifications as may be required to permit improvements in the performance, reliability, or manufacturability of its products. Before placing an order, the user is cautioned to verify that the information being relied upon is current. The information included herein is believed to be accurate and reliable. However, Allegro MicroSystems, LLC assumes no responsibility for its use; nor for any infringement of patents or other rights of third parties which may result from its use.

For Reference Only – Not for Tooling Use


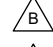

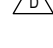
(Reference DWG-9063)

Dimensions in millimeters – NOT TO SCALE
Dimensions exclusive of mold flash, gate burrs and dambar protrusions
Exact case and lead dimensions at supplier discretion within limits shown



D Standard Branding Reference View

A = Supplier emblem
N = Last two digits of device part number
T = Temperature code
Y = Last digit of year of manufacture
W = Week of manufacture

-  Dambar removal protrusion (6X)
-  Gate and tie bar burr area
-  Active Area Depth = 0.42 NOM
-  Branding scale and appearance at supplier discretion

Designator: UA - TI/TJ/TN

Type: 3-pin SIP, matrix leadframe

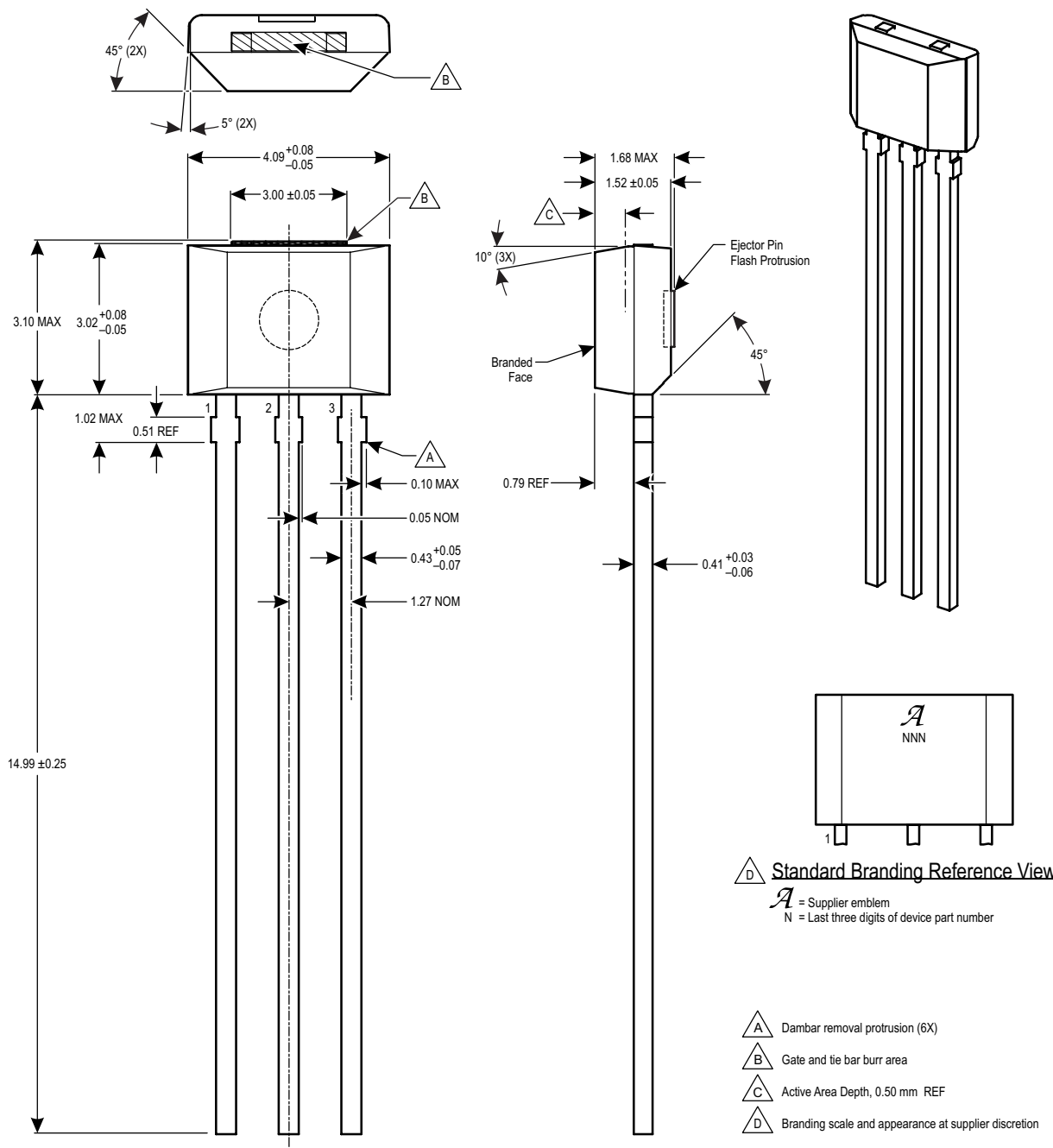
For Reference Only – Not for Tooling Use

(Reference DWG-9065)

Dimensions in millimeters – NOT TO SCALE

Dimensions exclusive of mold flash, gate burrs and dambar protrusions

Exact case and lead dimensions at supplier discretion within limits shown



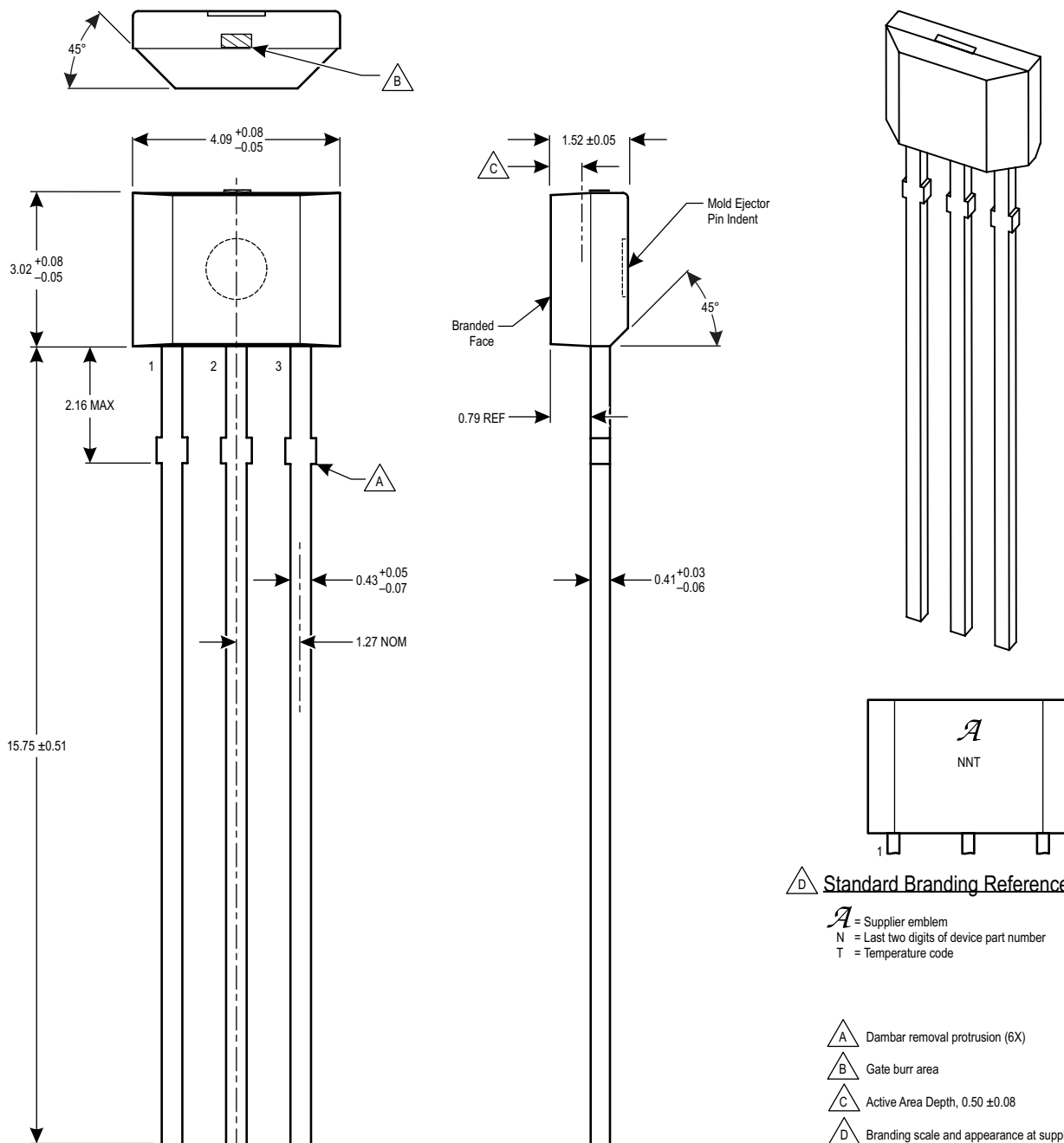
Copyright ©2008-2013, Allegro MicroSystems, LLC drawings are for reference only; not for tooling use. Refer to the individual datasheet for information on a specific product package. Allegro MicroSystems, LLC reserves the right to make, from time to time, such departures from the detail specifications as may be required to permit improvements in the performance, reliability, or manufacturability of its products. Before placing an order, the user is cautioned to verify that the information being relied upon is current. The information included herein is believed to be accurate and reliable. However, Allegro MicroSystems, LLC assumes no responsibility for its use; nor for any infringement of patents or other rights of third parties which may result from its use.

Designator: UA - TI/TJ/TN Type: 3-pin SIP, conventional leadframe

For Reference Only – Not for Tooling Use

(Reference DWG-9049)

Dimensions in millimeters – NOT TO SCALE
Dimensions exclusive of mold flash, gate burrs and dambar protrusions
Exact case and lead dimensions at supplier discretion within limits shown



Copyright ©2008-2013, Allegro MicroSystems, LLC drawings are for reference only; not for tooling use. Refer to the individual datasheet for information on a specific product package. Allegro MicroSystems, LLC reserves the right to make, from time to time, such departures from the detail specifications as may be required to permit improvements in the performance, reliability, or manufacturability of its products. Before placing an order, the user is cautioned to verify that the information being relied upon is current. The information included herein is believed to be accurate and reliable. However, Allegro MicroSystems, LLC assumes no responsibility for its use; nor for any infringement of patents or other rights of third parties which may result from its use.

Designator: UA - TL/TS

Type: 3-pin SIP, conventional leadframe or matrix

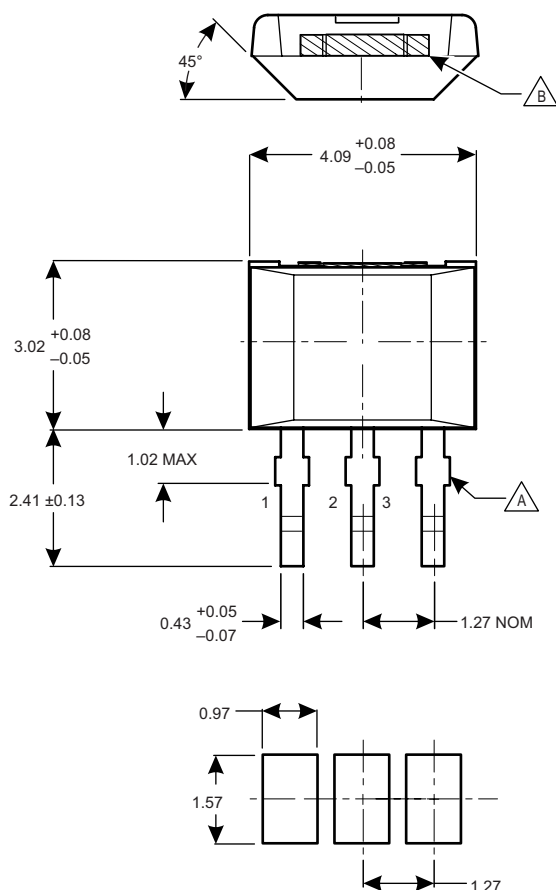
For Reference Only – Not for Tooling Use

(For package outline, reference DWG-9065; for lead forming, reference DWG-9116)

Dimensions in millimeters – NOT TO SCALE

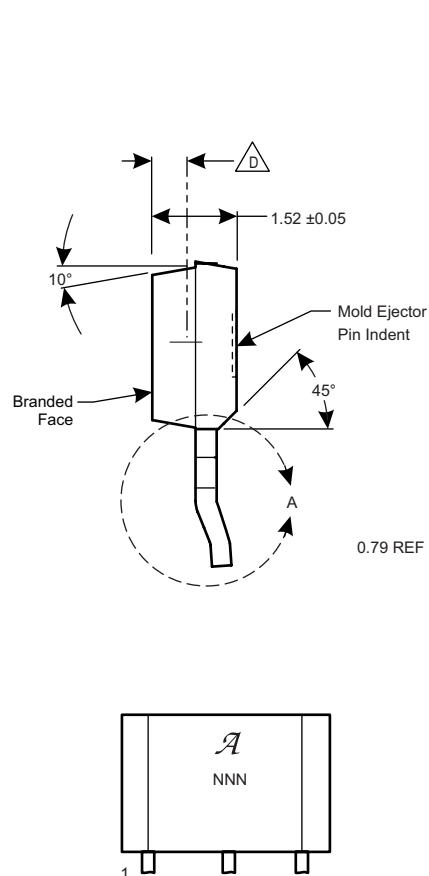
Dimensions exclusive of mold flash, gate burrs and dambar protrusions

Exact case and lead dimensions at supplier discretion within limits shown



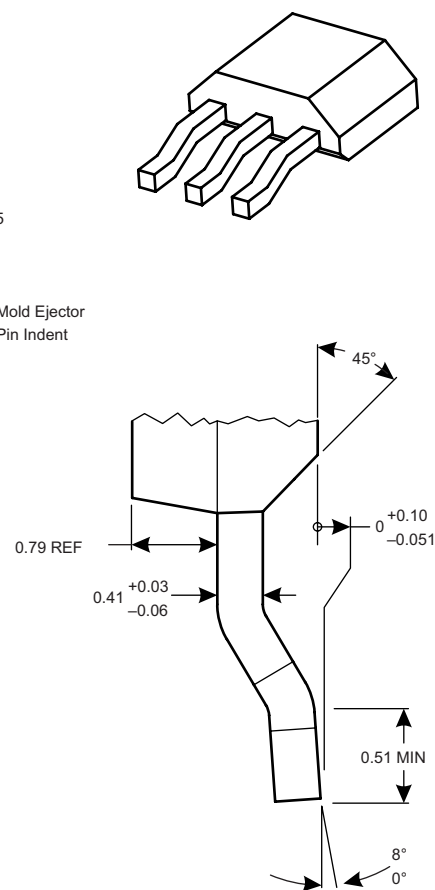
F PCB Reference Layout View

- A** Dambar removal protrusion (8X)
- B** Gate and tie burr area
- C** Branding scale and appearance at supplier discretion
- D** Active Area Depth, 0.50 ±0.08
- F** Reference land pattern layout; all pads a minimum of 0.20 mm from all adjacent pads; adjust as necessary to meet application process requirements and PCB tolerances



D Standard Branding Reference View

\mathcal{A} = Supplier emblem
N = Last three digits of device part number



Detail A

Designator: UB

Type: 2-pin SIP, molded lead bar

For Reference Only – Not for Tooling Use

(Reference DWG-9070)

Dimensions in millimeters – NOT TO SCALE

Dimensions exclusive of mold flash, gate burrs and dambar protrusions
Exact case and lead dimensions at supplier discretion within limits shown

