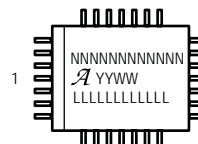
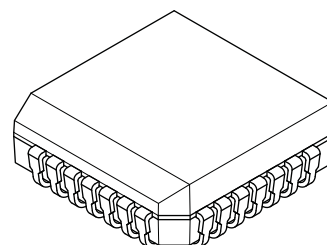
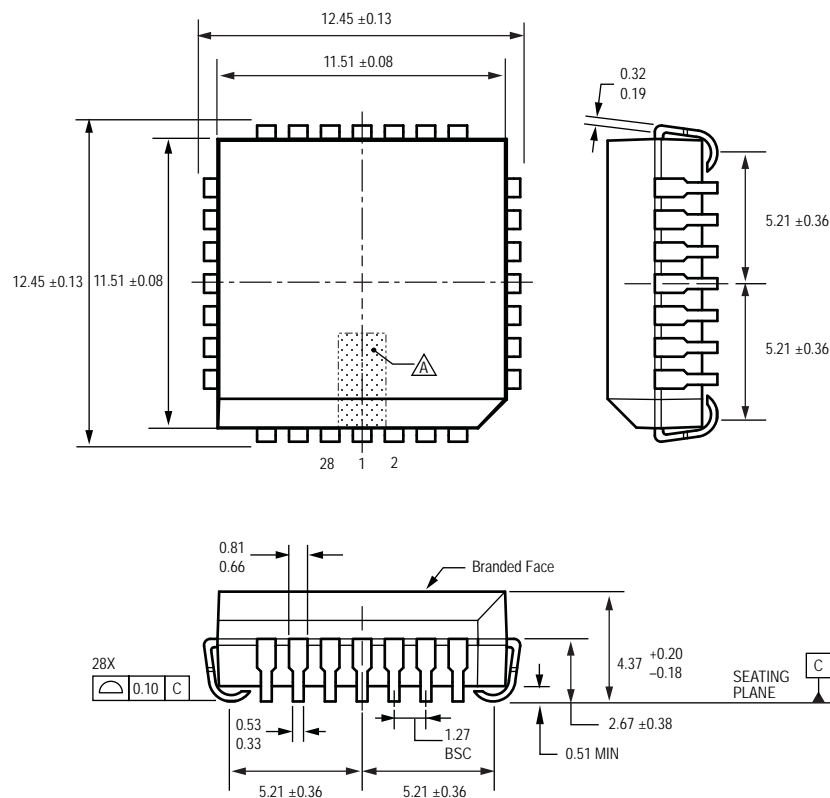


Designator: EA

Type: 28-pin, square PLCC with internally fused pins for thermal dissipation



Standard Branding Reference View

N = Device part number
A = Supplier emblem
Y = Last two digits of year of manufacture
W = Week of manufacture
L = Lot number

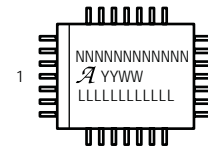
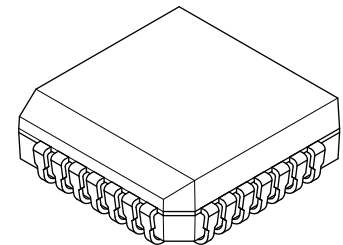
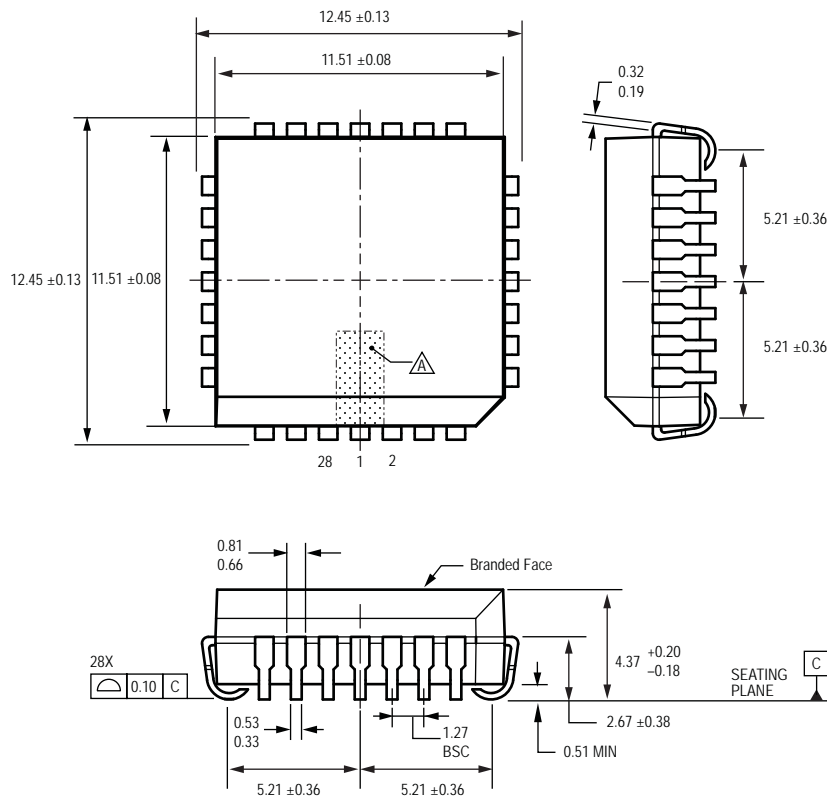
For Reference Only; not for tooling use (reference MS-018 AB)
Dimensions in millimeters
Dimensions exclusive of mold flash, gate burrs, and dambar protrusions
Exact case and lead configuration at supplier discretion within limits shown

- Terminal #1 mark area**
- Branding scale and appearance at supplier discretion**

Fused pins on side opposite pin 1; internal configuration of fused pins is device-dependent

Designator: EB

Type: 28-pin, square PLCC with internally fused pins for thermal dissipation



Standard Branding Reference View

N = Device part number
 A = Supplier emblem
 Y = Last two digits of year of manufacture
 W = Week of manufacture
 L = Lot number

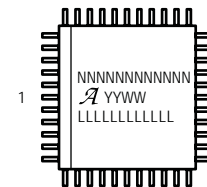
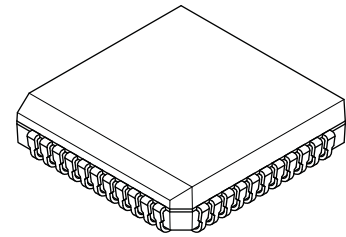
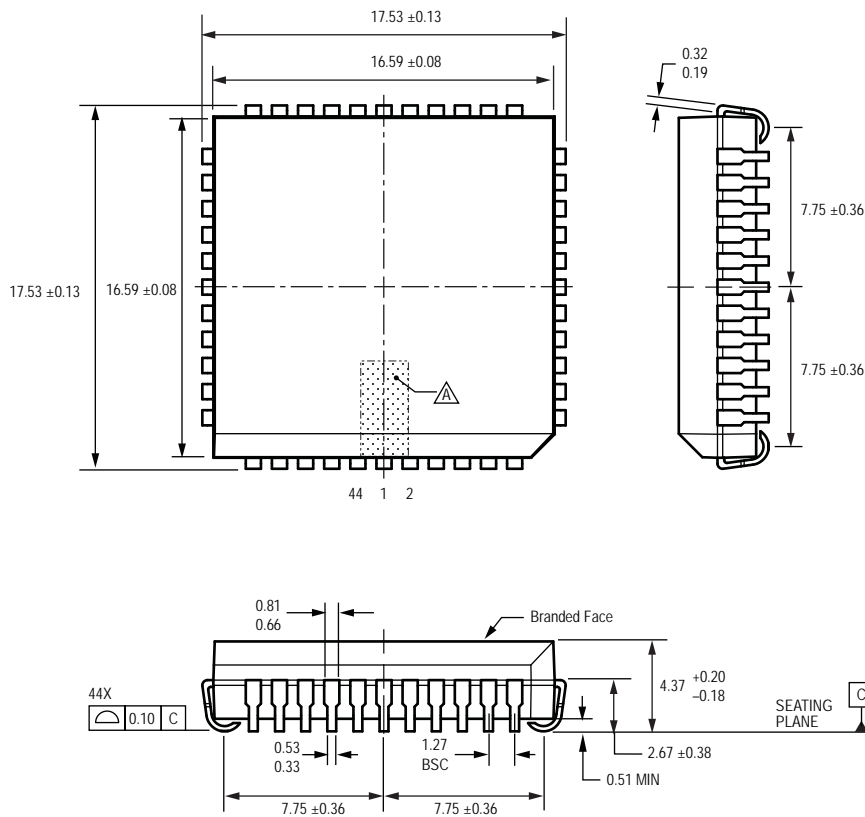
For Reference Only; not for tooling use (reference MS-018 AB)
 Dimensions in millimeters
 Dimensions exclusive of mold flash, gate burrs, and dambar protrusions
 Exact case and lead configuration at supplier discretion within limits shown

- Terminal #1 mark area**
- Branding scale and appearance at supplier discretion**

Fused pins on two opposite sides; internal configuration of fused pins is device-dependent

Designator: EB

Type: 44-pin, square PLCC with internally fused pins for thermal dissipation



Standard Branding Reference View

N = Device part number
A = Supplier emblem
Y = Last two digits of year of manufacture
W = Week of manufacture
L = Lot number

For Reference Only: not for tooling use (reference MS-018 AC)
Dimensions in millimeters
Dimensions exclusive of mold flash, gate burrs, and dambar protrusions
Exact case and lead configuration at supplier discretion within limits shown

Terminal #1 mark area

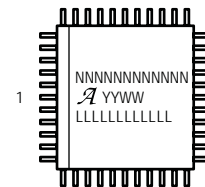
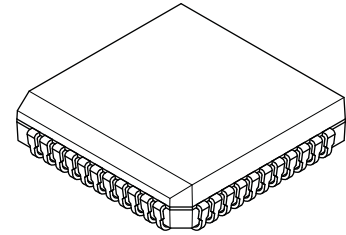
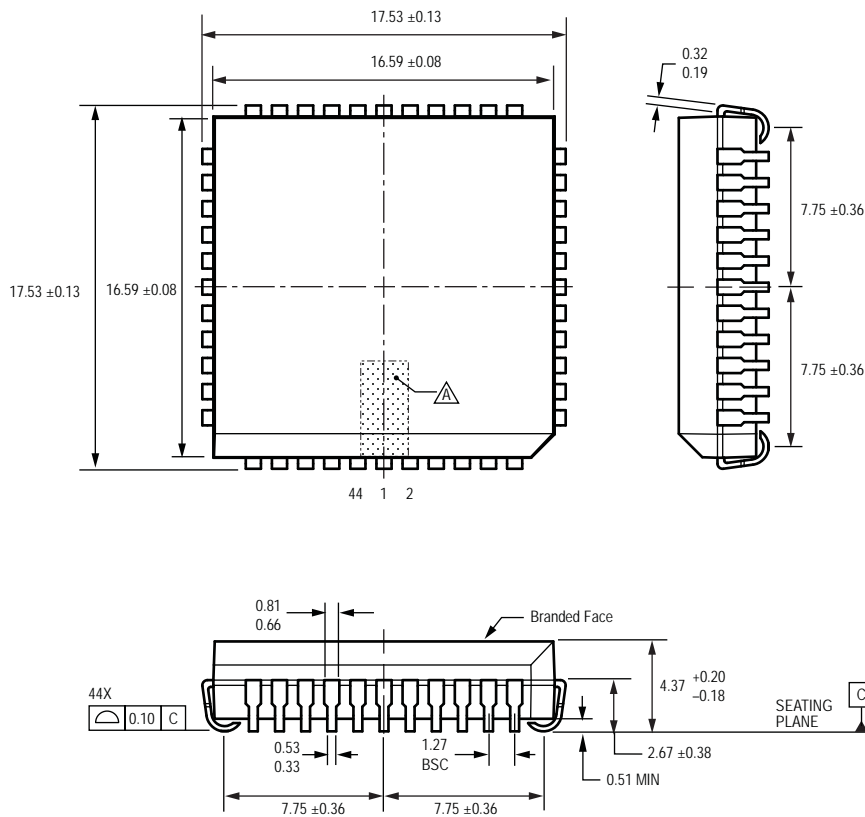
Branding scale and appearance at supplier discretion

Fused pins on two opposite sides; internal configuration of fused pins is device-dependent

Copyright ©2008-2013, Allegro MicroSystems, LLC drawings are for reference only; not for tooling use. Refer to the individual datasheet for information on a specific product package. Allegro MicroSystems, LLC reserves the right to make, from time to time, such departures from the detail specifications as may be required to permit improvements in the performance, reliability, or manufacturability of its products. Before placing an order, the user is cautioned to verify that the information being relied upon is current. The information included herein is believed to be accurate and reliable. However, Allegro MicroSystems, LLC assumes no responsibility for its use; nor for any infringement of patents or other rights of third parties which may result from its use.

Designator: ED

Type: 44-pin, square PLCC with internally fused pins for thermal dissipation



 Standard Branding Reference View

N = Device part number
A = Supplier emblem
 Y = Last two digits of year of manufacture
 W = Week of manufacture
 L = Lot number

For Reference Only; not for tooling use (reference MS-018 AC)
Dimensions in millimeters
Dimensions exclusive of mold flash, gate burrs, and dambar protrusions
Exact case and lead configuration at supplier discretion within limits shown

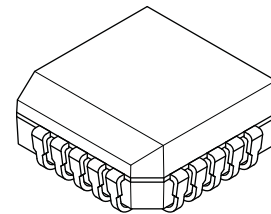
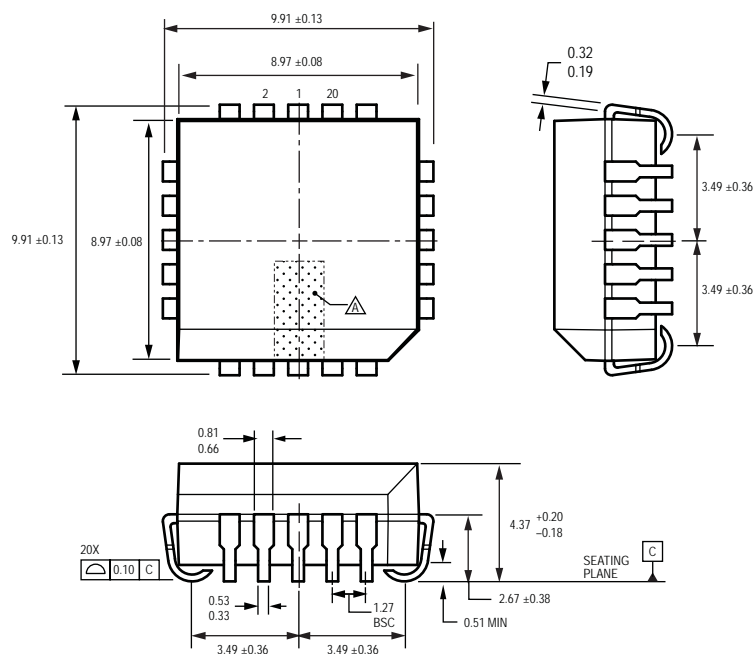
 Terminal #1 mark area

 Branding scale and appearance at supplier discretion

Fused pins on four sides; internal configuration of fused pins is device-dependent

Designator: EP

Type: 20-pin, square PLCC



For Reference Only; not for tooling use (reference MS-018 AA)

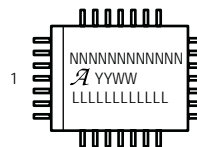
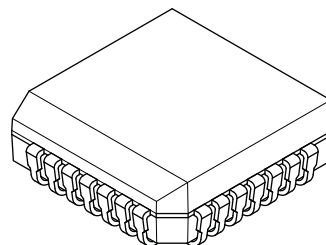
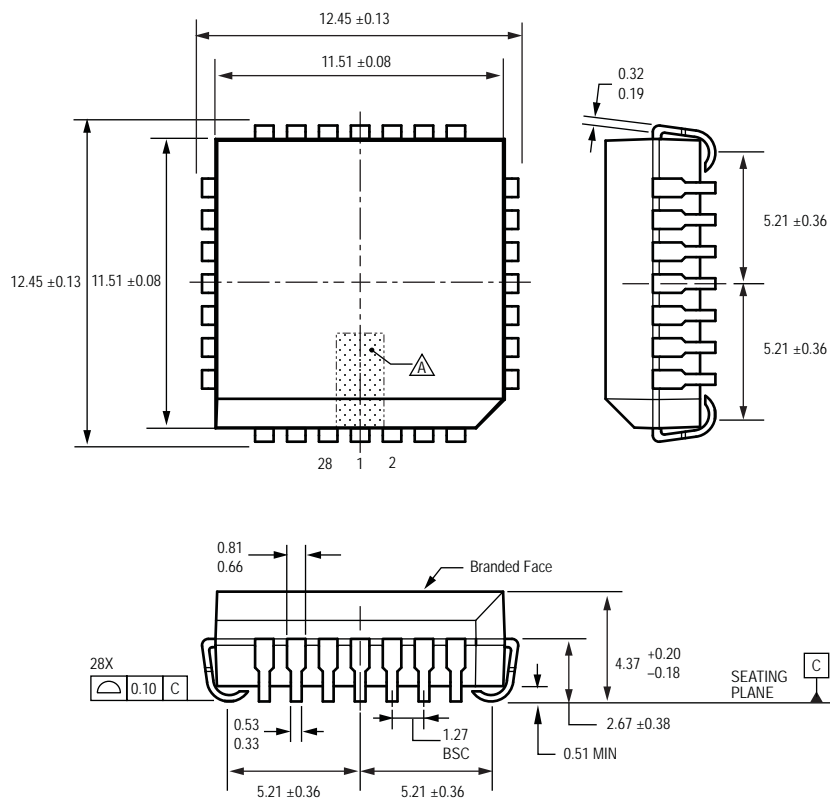
Dimensions in millimeters

Dimensions exclusive of mold flash, gate burrs, and dambar protrusions

Exact case and lead configuration at supplier discretion within limits shown

 Terminal #1 mark area

 Branding scale and appearance at supplier discretion



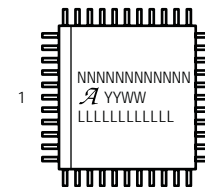
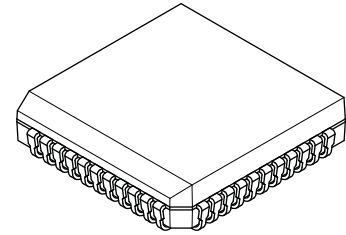
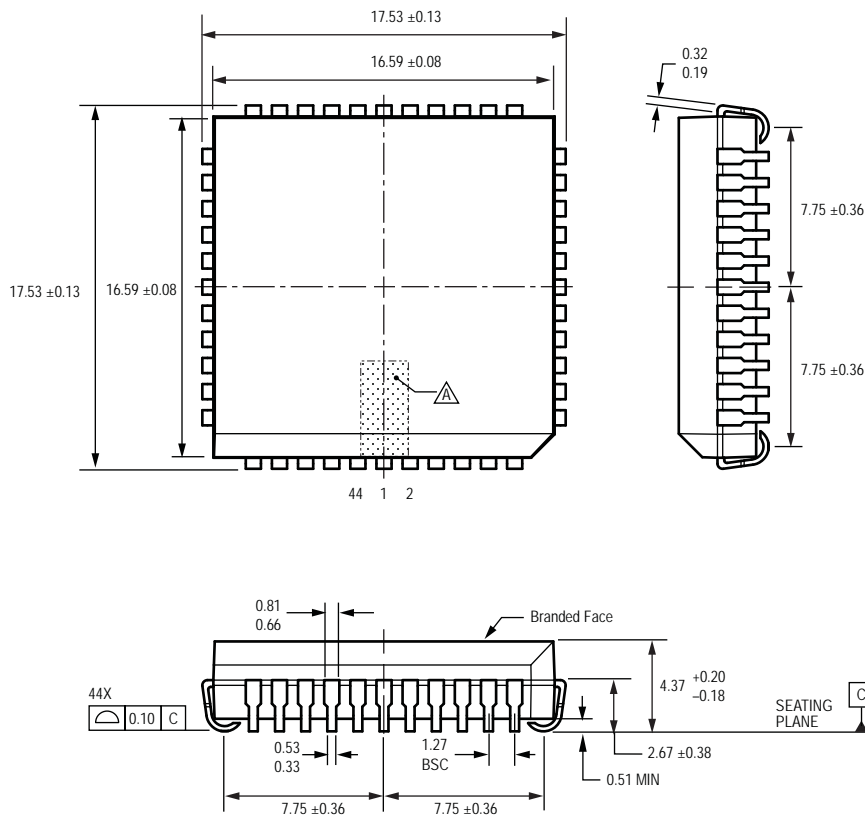
 Standard Branding Reference View

N = Device part number
A = Supplier emblem
Y = Last two digits of year of manufacture
W = Week of manufacture
L = Lot number

For Reference Only; not for tooling use (reference MS-018 AB)
Dimensions in millimeters
Dimensions exclusive of mold flash, gate burrs, and dambar protrusions
Exact case and lead configuration at supplier discretion within limits shown

 Terminal #1 mark area

 Branding scale and appearance at supplier discretion



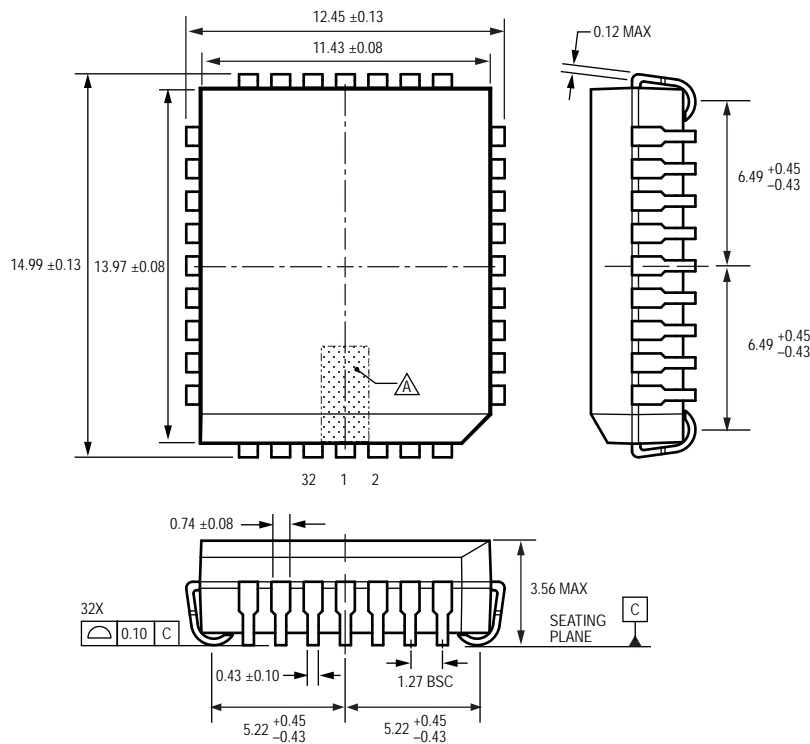
 Standard Branding Reference View

N = Device part number
A = Supplier emblem
Y = Last two digits of year of manufacture
W = Week of manufacture
L = Lot number

For Reference Only: not for tooling use (reference MS-018 AC)
Dimensions in millimeters
Dimensions exclusive of mold flash, gate burrs, and dambar protrusions
Exact case and lead configuration at supplier discretion within limits shown

 Terminal #1 mark area

 Branding scale and appearance at supplier discretion



△ Terminal #1 mark area