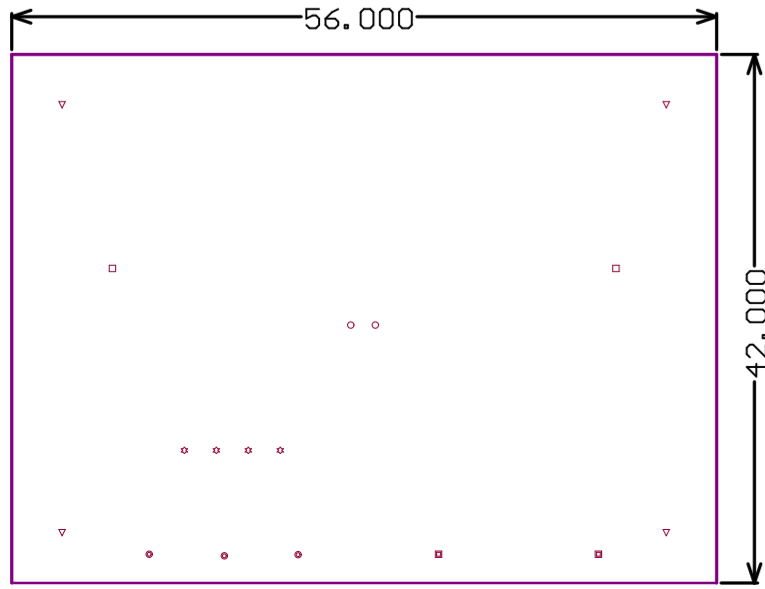


ASEK37612, EVB, Buss Bar  
TED-0002978-FAB  
Originator: S. Upton  
Rev 3  
10/23/2019

Layer	Name	Material	Thickness	Constant	Board Layer Stack
1	TopOverlay				
2	TopSolder	Solder Resist	0.40mil	3.5	
3	TopLayer	Copper	1.40mil		
4	Dielectric1	FR-4	58.00mil	4.2	
5	BottomLayer	Copper	1.40mil		
6	BottomSolder	Solder Resist	0.40mil	3.5	
7	BottomOverlay				

Symbol	Count	Hole Size	Plated	Hole Type	Drill Layer Pair	Via/Pad
○	2	15.00mil (0.381mm)	PTH	Round	TopLayer - BottomLayer	Via
☆	4	42.00mil (1.067mm)	PTH	Round	TopLayer - BottomLayer	Pad
▣	2	56.00mil (1.422mm)	PTH	Round	TopLayer - BottomLayer	Pad
⊙	3	62.00mil (1.575mm)	PTH	Round	TopLayer - BottomLayer	Pad
□	2	94.49mil (2.400mm)	NPTH	Round	TopLayer - BottomLayer	Pad
▽	4	137.80mil (3.500mm)	NPTH	Round	TopLayer - BottomLayer	Pad
	17 Total					

Layers not for PCB fabrication (ignore if present in zip file)  
Mechanical Layer 2 \*.gm2 is footprint notes (not for fab house)  
Mechanical Layer 3 \*.gm3 is hole location guide  
Mechanical Layer 5 \*.gm5 is topside labels (if no silk)  
Mechanical Layer 6 \*.gm6 is bottomside labels (if no silk)  
Mechanical Layer 13 \*.gm13 is 3D Bodies  
Mechanical Layer 15 \*.gm15 is Component Courtyard  
Mechanical Layer 16 \*.gm16 is Topside height restrictions  
Mechanical Layer 17 \*.gm17 is Bottomside height restrictions  
Keepout layer \*.gko is for internal usage only, and is not to be used by board house  
\*.gpb and \*.gpt are pad master layers, and are not used (ignore if in zip file)  
Layers for PCB fabrication:  
Mechanical Layer 1 \*.gm1 is Board Outline, slots and circular cutouts  
Mechanical Layer 4 \*.gm4 is board outline dimensions  
Mechanical Layer 7 \*.gm7 is FAB drawing notes  
Mechanical Layer 8 \*.gm8 is top selective hard gold  
Mechanical Layer 9 \*.gm9 is bottom selective hard gold  
Mechanical Layer 20 \*.gm20 is top layer shorting traces  
Mechanical Layer 21 \*.gm21 is bottom layer shorting traces  
Mech layer 20 and 21 already combined with top and bottom, but provided to show where deliberate shorts exist between different nets.  
\*.gtl and \*.gbl are top and bottom layers  
\*.gto and \*.gbo are top and bottom layer silkscreen (aka overlay)  
\*.gts and \*.gbs are top and bottom soldermask  
\*.drl is NC Drill  
\*.apr is aperature file  
\*.gpx (where x is a number) are plane layers. Refer to stackup table for location  
Plane layers are negative layers (all other layers positive)  
\*.qx (where x is a number) are internal layers. Refer to stackup table for location



# FAB Drawing / FAB Notes and Requirements

- Finished PCB is RoHS
- Dimensions are in millimeters, unless otherwise noted.
- Applicable Standards:
  - Manufacture in accordance to IPC-6011, IPC-6012 for Class 2 applications.
  - PCB shall meet acceptance criteria as required for Class 2 PCB as defined in IPC-600
  - UL Approved to a minimum catagory of 94V0.
- Laminate:
  - Thickness: 0.062inch +/- 10%
  - Type: high temp FR4
  - This line left blank
  - Core/prepreg thickness:
    - See chart to left.
    - Core/prepreg thicknesses to be roughly uniform thickness or +/-5mil from indicated
    - No impedance controlled stackup required
- Copper:
  - Layer Count: 2
  - Finish copper to thickness indicated in stackup table.
  - This line intentionally left blank.
  - Plated through holes: plate to 1mil min copper thickness
  - Trace separation: 10mil
  - Trace min width: 10mil
  - Line width reduction due to pinholes nicks or shrinking: 20% max.
  - No impedance controlled route used; no trace width adjustment required.
- If PCB has regions where more than 1 square inch of soldermask is removed:
  - All PCB lands in this region (square and round) are to be 100% pristine.
  - Lands outside this region may remain at 80% pristine as defined by IPC-6012.
  - Board flatness in this region shall not exceed 0.001inch total
- Total board flatness shall not exceed 0.002inch per inch.
- Artwork layer registration shall be within 0.003inch total.
- Surface Finish:
  - Immersion Gold
  - No hard gold plating required.
- Soldermask:
  - Top/Bottom soldermask required
  - Soldermask color shall be blue
  - Soldermask finish may be matte or glossy.
  - Soldermask openings may be modified to remove soldermask slivers. Other alterations require approval.
- Silkscreen
  - Top/bottom silkscreen required.
  - Silkscreen color shall be white.
  - Min silkscreen line width: 4mil
  - Epoxy or acrylic ink allowed
  - Photoimaging or inkject printing shall be used
  - Allegro Logo shall be printed as accurately as possible.
    - Silkscreen imperfections in other regions allowed. Do not hold job for minor blemishes elsewhere.
- Drill holes:
  - No blind or buried vias.
  - Hole sizes are specified after plating.
  - No via in pad used. No via filling required.
  - If not stated elsewhere: drill diam tolerance is +/-5mil
  - If not stated elsewhere: drill registration is +/-3mil
- Mill separate or v-score according to mech1 (\*.gm1) layer.
- Electrical testing required.
- Contact information:
  - Shawn Upton supton@allegromicro.com, 603.626.2429
  - If fast turn board, 24hr contact info: N/A

